

13/15/18/20BR-9 25/30BR-9

Electric Reach Trucks

MOVING YOU FURTHER

HYUNDAI CONSTRUCTION EQUIPMENT



 **HYUNDAI**
CONSTRUCTION EQUIPMENT

Head Office (Sales office)

First tower, 55, Bundang-ro, Bundang-gu, Seongnam-si, Gyeonggi-do, Korea

PLEASE CONTACT

www.hyundai-ce.com

2018. 07 Rev. 7

 **HYUNDAI**
CONSTRUCTION EQUIPMENT

Your satisfaction is our priority!

Hyundai introduces a new line of **9-series** battery forklift trucks. The newly designed stand up reach trucks provide every operator comfortable driving, increased productivity and easy maintenance.

Compact forklift with proven AC technology

- Maximum performance
- Comfortable operating room
- 3.5 inch LCD color Monitor
- Curve control system
- Load indicator (optional)



■ Some of the photos may include optional equipment.

High Efficiency & Optimal Performance



Efficient, smooth running and powerful performance make your work more productive.

13/15/18/20BR-9
25/30BR-9



Direction Lever

The accelerator control provides the operator with precise and smooth directional control.



Electric Power Steering(EPS)

EPS assures effortless steering allowing less fatigue to the operator. Machine performance and battery life are also enhanced.



■ Some of the photos may include optional equipment.

Versatile Reach Stroke

Multi-roller reach assembly provides a smooth, controlled and safe load handling system. Extended reach allows unsurpassed versatility.



■ Some of the photos may include optional equipment.

Minimum Turning Radius

Compact design suitable for narrow aisle operation guarantees work efficiency and maximum space utilization.



Advanced drive and lift performance with proven durability and low maintenance

The enclosed drive and pump motor with AC technology combine power, high maintenance intervals and excellent durability. The brushless AC motors offer improved efficiency and reduction maintenance cost.



High Technology ZAPI Controller

The efficient, almost noiseless, 8khz(high frequency) ZAPI controller provides smooth quiet operation and protection for low & high voltage, overheating and fault recording.



DC-DC Converter

DC-DC converter, satisfied with UL & CE, prevents from short circuit, overload and reverse polarity.

Anti roll back system, travel speed and gradeability

Anti Roll-back system offers protection against the machine rolling back on a ramp in combination with exceptional ramp start capabilities.



Max.Gradeability (loaded)

Model	%
13BR-9	19
15BR-9	27
18BR-9	25
20BR-9	23
25BR-9	15
30BR-9	13

Max.Travel Speed (Unloaded)

Model	Km / h
13BR-9	11.5
15BR-9	11
18BR-9	11
20BR-9	11
25BR-9	12
30BR-9	11

Optimised Ergonomics & Advanced Safety



The safely designed driver's space makes your operating more comfortable.

13/15/18/20BR-9
25/30BR-9



■ Some of the photos may include optional equipment.



■ Some of the photos may include optional equipment.

Excellent visibility for safe operation

Optimized lift cylinder arrangement provides operator with wider visibility.



Newly Designed Steer Control Handle

A newly designed steering control coupled with our new Electric Power Steering control gives the operator exceptionally smooth and controlled steering for tight spaces.



User Friendly Hydraulic Control Lever

Minimal operator effort is required for precise, safe and productive control. As a standard layout is used, the operator learning curve is lessened.



Non Slip Floor Mat

A heavy, vibration dampening, non-slip floor mat reduces operator fatigue and allows for increased productivity and Removing the side cover provides wider space to the operator.



Break Pedal

Smoother breaking is assured by the balanced design of the pedal and maintenance costs are lowered as the cover is easily replaceable.



Strong Overhead Guard

The safety overhead guard meets EEC and ANSI regulations and protects the operator during hazardous work.



Back Pad

Applying the height adjustable back pad increases the convenience.



Operator's Compartment

A large and safe head cushion pad is positioned for operator's safety and comfort.

Fast and Easy Maintenance

An ideal arrangement of components ensures easy access and convenience for maintenance.

13/15/18/20BR-9
25/30BR-9



Battery Disconnect Lever & Emergency Switch

Emergency switch is designed to be easily blocked in case of emergency.



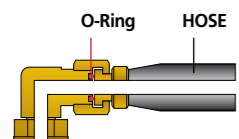
Disc Brake

Caliper disc brake increases braking force. Maintenance costs are lowered by easy replaceable brake pad.



EPS (Electric Power Steering) System

EPS assures effortless steering allowing less fatigue to the operator, Machine performance and battery life are also enhanced.



ORFS (O-Ring Face Seal)

ORFS type hose prevents the leaking of hydraulic oil.



Hydraulic Oil Level Gauge

The level gauge is installed on the outside of Hydraulic oil tank and it helps to check the OIL level easily and to refill at a proper time.



Concentrated Fuse Box for Easy Inspection



Improvement of Controller maintenance



Advanced LCD Monitor

Steering Wheel Position and running direction

Turtle mode

Speed (Digital)

Battery's state of charge

Thermometer warning lamp

Wrench warning lamp



Key1 button (roll up)

Key5 button (ESC Out)

Key3 button (Set down/Menu)

Key4 button (Set up/Performance)

Key6 button (Enter)

Key2 button (Roll down/Turtle)

The LCD color monitor with 3.5 inch graphic smart display allows the operator to easily and efficiently control the machine. The monitor provides information about speed & accelerator level, steer angle & travel direction, battery discharge indicator, hour meter & working mode. The optional load indicator displays the load weight in the monitor. The operator can select various performance modes to meet all working conditions. It is available multi-languages (maximum 11) for operator.

H (High) mode **N** (Normal) mode **E** (Economic) mode

Turtle mode



Easy battery replacement

The battery compartment is equipped with a side battery removal assembly for easy removal and replacement.

New 9 Series

13/15/18/20BR-9
25/30BR-9

Mast Specification (13BR-9)

Mast Type	Maximum Fork Height		Overall Height (Lowered)		Overall Height (Extended)				Free lift height						Tilt Angle		Load capacity w/o side shift		Load capacity w/side shift		TRUCK WEIGHT (UNLOADED)		
					With Load Backrest		Without Load Backrest		With Load Backrest		Without Load Backrest		Without Load Backrest (3/4-SPOOL)		Fwd	Bwd	24 in LC	500mm LC	24 in LC	500mm LC			
	in	mm	in	mm	in	mm	in	mm	in	mm	in	mm	in	mm	deg	deg	lb	kg	lb	kg	lb	kg	
2-STAGE LIMITED FREE LIFT	V250	98	2,525	69	1,741	139	3,525	121	3,084	11	267	11	267	11	267	5	5	2,500	1,250	2,500	1,250	4,614	2,093
	V270	106	2,725	72	1,841	147	3,725	129	3,284	11	267	11	267	11	267	5	5	2,500	1,250	2,500	1,250	4,646	2,107
	*V300	118	3,025	78	1,991	158	4,025	141	3,584	11	267	11	267	11	267	5	5	2,500	1,250	2,500	1,250	4,707	2,135
	V330	130	3,325	84	2,141	170	4,325	153	3,884	11	267	11	267	11	267	5	5	2,500	1,250	2,315	1,180	4,741	2,151
	V350	138	3,525	88	2,241	178	4,525	161	4,084	11	267	11	267	11	267	5	5	2,500	1,250	2,315	1,180	4,773	2,165
	V370	146	3,725	92	2,341	186	4,725	169	4,284	11	267	11	267	11	267	5	5	2,400	1,200	2,250	1,130	4,819	2,186
	V400	157	4,025	98	2,491	198	5,025	180	4,584	11	267	11	267	11	267	5	5	2,315	1,150	2,160	1,080	4,888	2,217
	V450	177	4,525	112	2,841	218	5,525	200	5,084	11	267	11	267	11	267	5	5	2,115	1,050	1,960	980	5,050	2,291
	V500	197	5,025	122	3,091	237	6,025	210	5,584	11	267	11	267	11	267	5	5	1,920	950	1,765	880	5,129	2,327
	V550	217	5,525	132	3,341	257	6,525	240	6,084	11	267	11	267	11	267	5	5	1,720	850	1,565	780	5,208	2,363
3-STAGE FULL FREE LIFT	TF370	146	3,735	71	1,807	186	4,735	169	4,294	30	772	48	1,213	44	1,105	5	5	2,380	1,200	2,225	1,130	4,994	2,265
	TF400	157	4,035	75	1,907	198	5,035	181	4,594	34	872	52	1,313	47	1,205	5	5	2,295	1,150	2,140	1,080	5,043	2,287
	TF430	170	4,335	79	2,007	210	5,335	193	4,894	38	972	56	1,413	51	1,305	5	5	2,205	1,100	2,050	1,030	5,091	2,309
	TF450	177	4,535	83	2,107	218	5,535	201	5,094	42	1,072	60	1,513	57	1,455	5	5	2,005	1,000	1,850	930	5,137	2,330
	TF470	185	4,735	85	2,157	226	5,735	208	5,294	44	1,122	62	1,563	57	1,455	5	5	1,920	950	1,765	880	5,161	2,341
	TF500	197	5,035	89	2,257	238	6,035	220	5,594	48	1,222	65	1,663	61	1,555	5	5	1,810	900	1,655	830	5,211	2,364
	TF550	217	5,535	97	2,457	257	6,535	240	6,094	56	1,422	73	1,863	71	1,805	5	5	1,520	750	1,365	680	5,349	2,426
	TF600	236	6,035	105	2,657	277	7,035	260	6,594	64	1,622	81	2,063	79	2,005	5	5	1,325	650	1,170	580	5,438	2,467
	TF650	256	6,535	112	2,857	297	7,535	279	7,094	72	1,822	89	2,263	86	2,185	5	5	1,125	550	970	480	5,533	2,510
	TF700	273	7,035	120	3,057	316	8,035	299	7,594	80	2,022	97	2,463	93	2,365	5	5	705	350	550	280	5,628	2,553

* Standard
※ TF-Mast : Wide Visible 3-Stage Full Free Lift Mast with 1 Free Lift Cylinders.

Mast Specification (18BR-9)

Mast Type	Maximum Fork Height		Overall Height (Lowered)		Overall Height (Extended)				Free lift height						Tilt Angle		Load capacity w/o side shift		Load capacity w/side shift		TRUCK WEIGHT (UNLOADED)		
					With Load Backrest		Without Load Backrest		With Load Backrest		Without Load Backrest		Without Load Backrest (3/4-SPOOL)		Fwd	Bwd	24 in LC	500mm LC	24 in LC	500mm LC			
	in	mm	in	mm	in	mm	in	mm	in	mm	in	mm	in	mm	deg	deg	lb	kg	lb	kg	lb	kg	
2-STAGE LIMITED FREE LIFT	V250	98	2,525	69	1,741	139	3,525	121	3,084	11	267	11	267	11	267	5	5	3,500	1,800	3,500	1,800	5,068	2,299
	V270	106	2,725	72	1,841	147	3,725	129	3,284	11	267	11	267	11	267	5	5	3,500	1,800	3,500	1,800	5,099	2,313
	*V300	118	3,025	78	1,991	158	4,025	141	3,584	11	267	11	267	11	267	5	5	3,500	1,800	3,500	1,800	5,154	2,338
	V330	130	3,325	84	2,141	170	4,325	153	3,884	11	267	11	267	11	267	5	5	3,500	1,800	3,325	1,730	5,194	2,356
	V350	138	3,525	88	2,241	178	4,525	161	4,084	11	267	11	267	11	267	5	5	3,500	1,800	3,325	1,730	5,225	2,370
	V370	146	3,725	92	2,341	186	4,725	169	4,284	11	267	11	267	11	267	5	5	3,500	1,800	3,325	1,730	5,272	2,391
	V400	157	4,025	98	2,491	198	5,025	180	4,584	11	267	11	267	11	267	5	5	3,500	1,800	3,325	1,730	5,341	2,423
	V450	177	4,525	112	2,841	218	5,525	200	5,084	11	267	11	267	11	267	5	5	3,415	1,800	3,240	1,730	5,503	2,496
	V500	197	5,025	122	3,091	237	6,025	220	5,584	11	267	11	267	11	267	5	5	3,020	1,600	2,845	1,530	5,582	2,532
	V550	217	5,525	132	3,341	257	6,525	240	6,084	11	267	11	267	11	267	5	5	2,140	1,050	1,960	980	5,661	2,568
3-STAGE FULL FREE LIFT	TF370	146	3,735	71	1,807	186	4,735	169	4,294	30	772	48	1,213	44	1,105	5	5	3,500	1,800	3,325	1,730	5,472	2,482
	TF400	157	4,035	75	1,907	198	5,035	181	4,594	34	872	52	1,313	47	1,205	5	5	3,500	1,800	3,325	1,730	5,521	2,504
	TF430	170	4,335	79	2,007	210	5,335	193	4,894	38	972	56	1,413	51	1,305	5	5	3,415	1,750	3,240	1,680	5,570	2,526
	TF450	177	4,535	83	2,107	218	5,535	201	5,094	42	1,072	60	1,513	57	1,455	5	5	3,305	1,700	3,130	1,630	5,615	2,547
	TF470	185	4,735	85	2,157	226	5,735	208	5,294	44	1,122	62	1,563	57	1,455	5	5	3,220	1,650	3,040	1,580	5,639	2,558
	TF500	197	5,035	89	2,257	238	6,035	220	5,594	48	1,222	65	1,663	61	1,555	5	5	3,130	1,550	2,955	1,480	5,690	2,581
	TF550	217	5,535	97	2,457	257	6,535	240	6,094	56	1,422	73	1,863	71	1,805	5	5	2,645	1,350	2,470	1,280	5,827	2,643
	TF600	236	6,035	105	2,657	277	7,035	260	6,594	64	1,622	81	2,063	79	2,005	5	5	2,140	1,050	1,960	980	5,917	2,684
	TF650	256	6,535	112	2,857	297	7,535	279	7,094	72	1,822	89	2,263	86	2,185	5	5	1,655	800	1,475	730	6,012	2,727
	TF700	273	7,035	120	3,057	316	8,035	299	7,594	80	2,022	97	2,463	93	2,365	5	5	1,125	550	950	480	6,107	2,770

* Standard
※ TF-Mast : Wide Visible 3-Stage Full Free Lift Mast with 1 Free Lift Cylinders.

Mast Specification (15BR-9)

Mast Type	Maximum Fork Height		Overall Height (Lowered)		Overall Height (Extended)				Free lift height						Tilt Angle		Load capacity w/o side shift		Load capacity w/side shift		TRUCK WEIGHT (UNLOADED)		
					With Load Backrest		Without Load Backrest		With Load Backrest		Without Load Backrest		Without Load Backrest (3/4-SPOOL)		Fwd	Bwd	24 in LC	500mm LC	24 in LC	500mm LC			
	in	mm	in	mm	in	mm	in	mm	in	mm	in	mm	in	mm	deg	deg	lb	kg	lb	kg	lb	kg	
2-STAGE LIMITED FREE LIFT	V250	98	2,525	69	1,741	139	3,525	121	3,084	11	267	11	267	11	267	5	5	3,000	1,500	3,000	1,500	4,954	2,247
	V270	106	2,725	72	1,841	147	3,725	129	3,284	11	267	11	267	11	267	5	5	3,000	1,500	3,000	1,500	4,985	2,261
	V300	118	3,025	78	1,991	158	4,025	141	3,584	11	267	11	267	11	267	5	5	3,000	1,500	3,000	1,500	5,046	2,289
	V330	130	3,325	84	2,141	170	4,325	153	3,884	11	267	11	267	11	267	5	5	3,000	1,500	2,820	1,430	5,080	2,304
	V350	138	3,525	88	2,241	178	4,525	161	4,084	11	267	11	267	11	267	5	5	3,000	1,500	2,820	1,430	5,112	2,319
	V370	146	3,725	92	2,341	186	4,725	169	4,284	11	267	11	267	11	267	5	5	3,000	1,500	2,820	1,430	5,1	

New 9 Series

13/15/18/20BR-9
25/30BR-9

Mast Specification (25BR-9)

Mast Type	Maximum Fork Height		Overall Height (Lowered)		Overall Height (Extended)				Free lift height						Tilt Angle		Load capacity w/o side shift		Load capacity w/side shift		TRUCK WEIGHT (UNLOADED)		
	in	mm	in	mm	With Load Backrest		Without Load Backrest		With Load Backrest		Without Load Backrest		Without Load Backrest (3/4-SPOOL)		Fwd deg	Bwd deg	24 in LC lb	500mm LC kg	24 in LC lb	500mm LC kg	lb	kg	
					in	mm	in	mm	in	mm	in	mm	in	mm									
2-STAGE LIMITED FREE LIFT	V250	98	2,505	70	1,775	139	3,530	123	3,126	12	293	12	293	12	293	5	5	5,000	2,500	5,000	2,500	6,314	2,864
	V270	106	2,705	74	1,875	147	3,730	131	3,326	12	293	12	293	12	293	5	5	5,000	2,500	5,000	2,500	6,350	2,880
	*V300	118	3,005	80	2,025	159	4,030	143	3,626	12	293	12	293	12	293	5	5	5,000	2,500	5,000	2,500	6,404	2,905
	V330	130	3,305	86	2,175	170	4,330	155	3,926	12	293	12	293	12	293	5	5	5,000	2,500	4,825	2,420	6,457	2,929
	V350	138	3,505	90	2,275	178	4,530	162	4,126	12	293	12	293	12	293	5	5	5,000	2,500	4,825	2,420	6,493	2,945
	V370	146	3,705	95	2,425	186	4,730	170	4,326	12	293	12	293	12	293	5	5	5,000	2,500	4,825	2,420	6,564	2,977
	V400	157	4,005	101	2,575	198	5,030	182	4,626	12	293	12	293	12	293	5	5	5,000	2,500	4,825	2,420	6,652	3,017
	V430	170	4,305	107	2,725	210	5,330	194	4,926	12	293	12	293	12	293	5	5	5,000	2,500	4,825	2,420	6,777	3,074
	V450	177	4,505	113	2,875	218	5,530	202	5,126	12	293	12	293	12	293	5	5	4,895	2,450	4,720	2,370	6,832	3,099
	V470	185	4,705	117	2,975	226	5,730	210	5,326	12	293	12	293	12	293	5	5	4,805	2,400	4,630	2,320	6,868	3,115
V500	197	5,005	123	3,125	237	6,030	221	5,626	12	293	12	293	12	293	5	5	4,610	2,300	4,430	2,220	6,920	3,139	
3-STAGE FULL FREE LIFT	TF370	146	3,705	72	1,827	190	4,828	172	4,378	26	659	46	1,166	43	1,083	5	5	5,000	2,500	4,825	2,420	6,822	3,094
	TF400	157	4,005	76	1,927	202	5,128	184	4,678	30	759	50	1,266	47	1,183	5	5	5,000	2,500	4,825	2,420	6,876	3,119
	TF430	170	4,305	80	2,027	214	5,428	196	4,978	34	859	54	1,366	51	1,283	5	5	5,000	2,500	4,825	2,420	6,931	3,144
	TF450	177	4,505	84	2,127	222	5,628	204	5,178	38	959	58	1,466	56	1,433	5	5	4,895	2,450	4,720	2,370	6,982	3,167
	TF470	185	4,705	86	2,177	229	5,828	212	5,378	40	1,009	60	1,516	56	1,433	5	5	4,785	2,400	4,610	2,320	7,014	3,181
	TF500	197	5,005	90	2,277	241	6,128	224	5,678	44	1,109	64	1,616	60	1,533	5	5	4,630	2,300	4,455	2,220	7,065	3,205
	TF550	217	5,505	98	2,477	261	6,628	243	6,178	52	1,309	71	1,816	70	1,783	5	5	4,320	2,150	4,145	2,070	7,262	3,294
	TF600	236	6,005	105	2,677	281	7,128	263	6,678	59	1,509	79	2,016	78	1,983	5	5	4,235	2,100	4,055	2,020	7,368	3,342
	TF650	256	6,505	113	2,877	300	7,628	283	7,178	67	1,709	87	2,216	86	2,183	5	5	3,065	1,500	2,890	1,420	7,479	3,393
	TF700	273	7,005	121	3,077	320	8,128	302	7,678	75	1,909	95	2,416	94	2,383	5	5	2,185	1,050	2,005	970	7,586	3,441
TF750	295	7,505	127	3,227	340	8,628	322	8,178	81	2,059	101	2,566	98	2,483	5	5	1,255	600	1,080	520	7,659	3,474	

* Standard
* TF-Mast : Wide Visible 3-Stage Full Free Lift Mast with 1 Free Lift Cylinders.

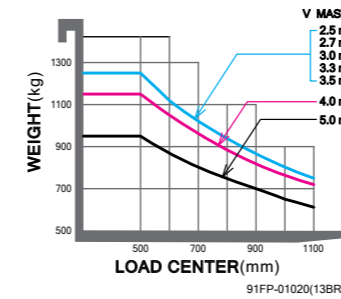
Mast Specification (30BR-9)

Mast Type	Maximum Fork Height		Overall Height (Lowered)		Overall Height (Extended)				Free lift height						Tilt Angle		Load capacity w/o side shift		Load capacity w/side shift		TRUCK WEIGHT (UNLOADED)		
	in	mm	in	mm	With Load Backrest		Without Load Backrest		With Load Backrest		Without Load Backrest		Without Load Backrest (3/4-SPOOL)		Fwd deg	Bwd deg	24 in LC lb	500mm LC kg	24 in LC lb	500mm LC kg	lb	kg	
					in	mm	in	mm	in	mm	in	mm	in	mm									
2-STAGE LIMITED FREE LIFT	V250	98	2,505	70	1,775	139	3,530	125	3,167	12	293	12	293	12	293	5	5	6,000	3,000	6,000	3,000	7,118	3,229
	V270	106	2,705	74	1,875	147	3,730	133	3,367	12	293	12	293	12	293	5	5	6,000	3,000	6,000	3,000	7,154	3,245
	*V300	118	3,005	80	2,025	159	4,030	144	3,667	12	293	12	293	12	293	5	5	6,000	3,000	6,000	3,000	7,208	3,269
	V330	130	3,305	86	2,175	170	4,330	156	3,967	12	293	12	293	12	293	5	5	6,000	3,000	5,825	2,920	7,262	3,294
	V350	138	3,505	90	2,275	178	4,530	164	4,167	12	293	12	293	12	293	5	5	6,000	3,000	5,825	2,920	7,297	3,310
	V370	146	3,705	95	2,425	186	4,730	172	4,367	12	293	12	293	12	293	5	5	6,000	3,000	5,825	2,920	7,368	3,342
	V400	157	4,005	101	2,575	198	5,030	184	4,667	12	293	12	293	12	293	5	5	6,000	3,000	5,825	2,920	7,456	3,382
	V430	170	4,305	107	2,725	210	5,330	196	4,967	12	293	12	293	12	293	5	5	6,000	3,000	5,825	2,920	7,581	3,439
	V450	177	4,505	113	2,875	218	5,530	203	5,167	12	293	12	293	12	293	5	5	5,910	2,950	5,730	2,870	7,636	3,464
	V470	185	4,705	117	2,975	226	5,730	211	5,367	12	293	12	293	12	293	5	5	5,820	2,900	5,645	2,820	7,672	3,480
V500	197	5,005	123	3,125	237	6,030	223	5,667	12	293	12	293	12	293	5	5	5,730	2,850	5,555	2,770	7,724	3,504	
3-STAGE FULL FREE LIFT	TF370	146	3,705	72	1,827	190	4,828	172	4,378	26	659	46	1,166	43	1,083	5	5	6,000	3,000	5,825	2,920	7,636	3,464
	TF400	157	4,005	76	1,927	202	5,128	184	4,678	30	759	50	1,266	47	1,183	5	5	6,000	3,000	5,825	2,920	7,690	3,488
	TF430	170	4,305	80	2,027	214	5,428	196	4,978	34	859	54	1,366	51	1,283	5	5	6,000	3,000	5,825	2,920	7,745	3,513
	TF450	177	4,505	84	2,127	222	5,628	204	5,178	38	959	58	1,466	56	1,433	5	5	6,000	3,000	5,825	2,920	7,796	3,536
	TF470	185	4,705	86	2,177	229	5,828	212	5,378	40	1,009	60	1,516	56	1,433	5	5	5,820	2,900	5,645	2,820	7,828	3,551
	TF500	197	5,005	90	2,277	241	6,128	224	5,678	44	1,109	64	1,616	60	1,533	5	5	5,730	2,850	5,555	2,770	7,879	3,574
	TF550	217	5,505	98	2,477	261	6,628	243	6,178	52	1,309	71	1,816	70	1,783	5	5	5,245	2,600	5,070	2,520	8,076	3,663
	TF600	236	6,005	105	2,677	281	7,128	263	6,678	59	1,509	79	2,016	78	1,983	5	5	4,565	2,250	4,385	2,170	8,182	3,712
	TF650	256	6,505	113	2,877	300	7,628	283	7,178	67	1,709	87	2,216	86	2,183	5	5	3,195	1,550	3,020	1,470	8,294	3,762
	TF700	273	7,005	121	3,077	320	8,128	302	7,678	75	1,909	95	2,416	94	2,383	5	5	2,295	1,100	2,115	1,020	8,400	3,810
TF750	295	7,505	127	3,227	340	8,628	322	8,178	81	2,059	101	2,566	98	2,483	5	5	1,765	850	1,585	770	8,473	3,843	

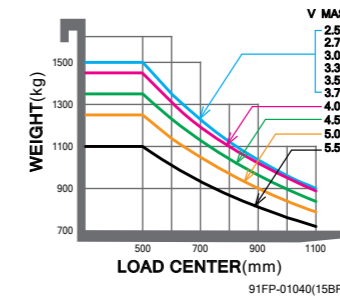
* Standard
* TF-Mast : Wide Visible 3-Stage Full Free Lift Mast with 1 Free Lift Cylinders.

Load Capacity

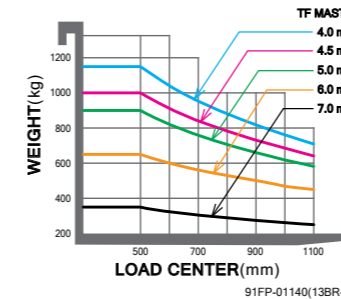
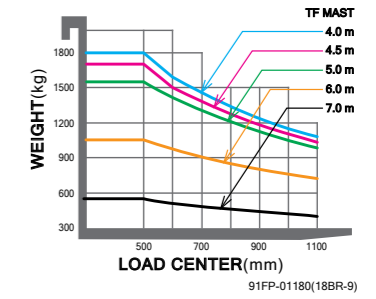
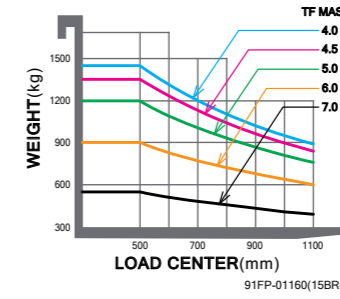
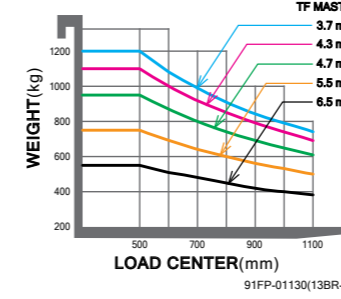
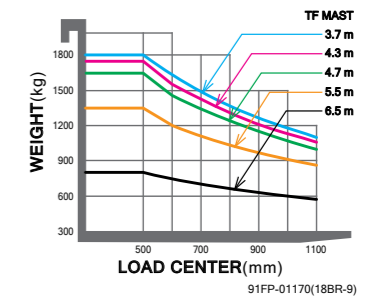
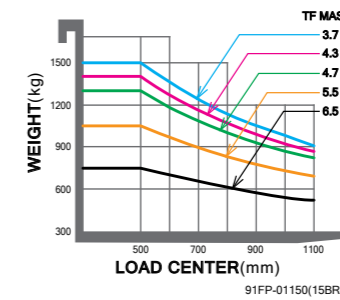
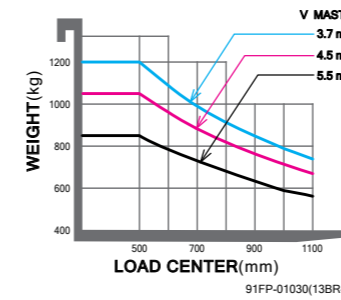
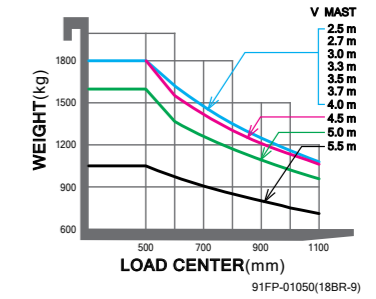
13BR-9



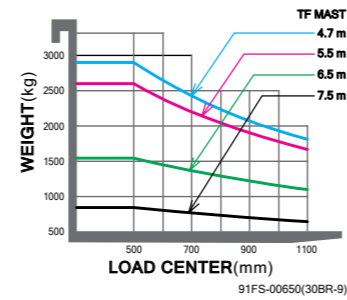
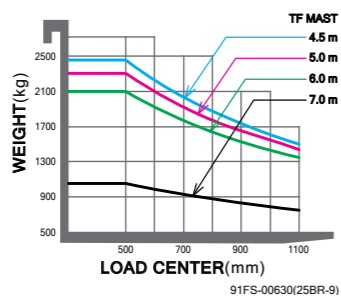
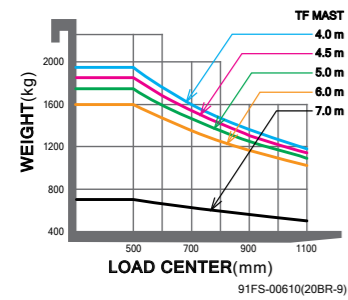
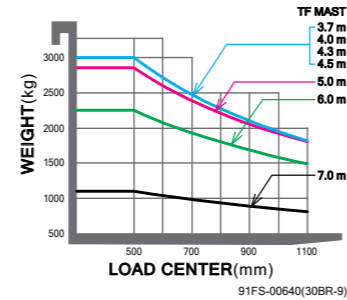
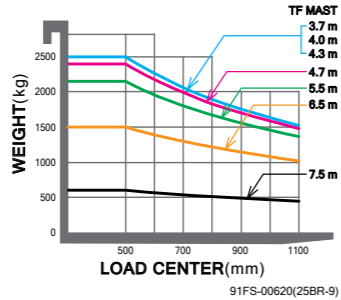
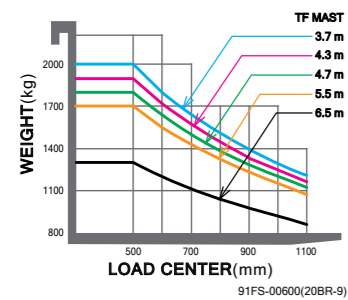
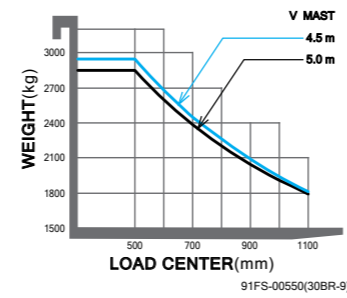
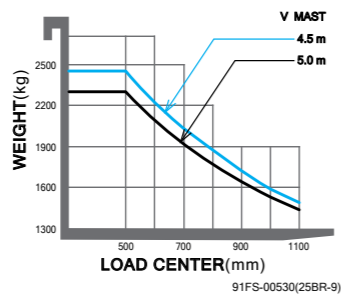
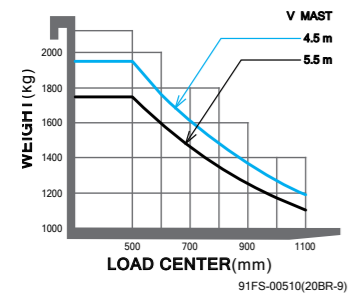
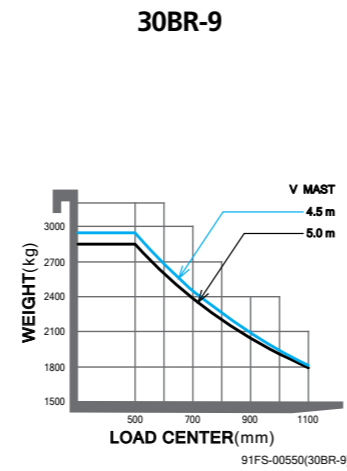
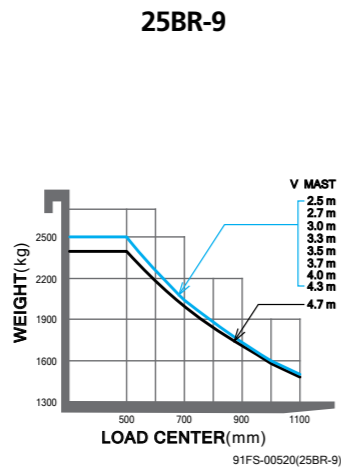
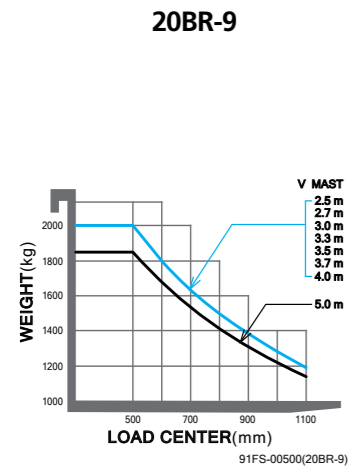
15BR-9



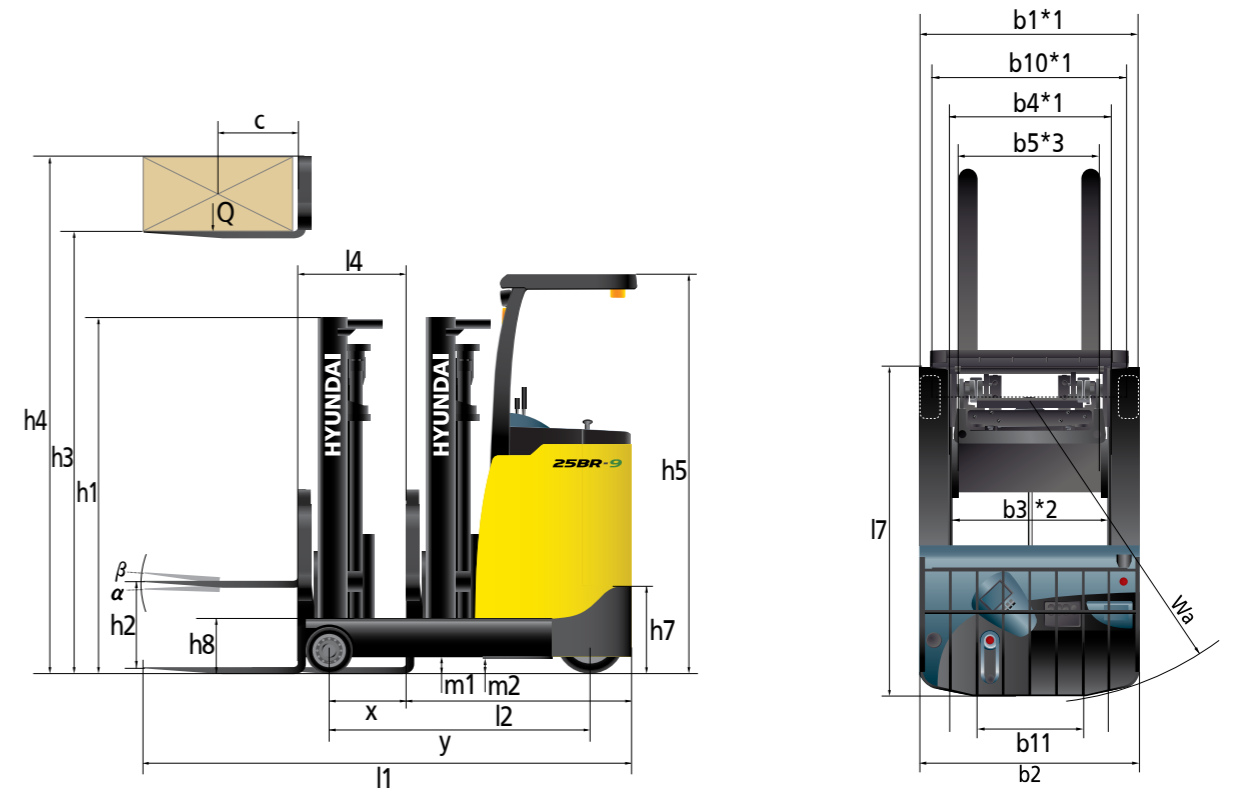
18BR-9



Load Capacity



Dimension



Specification

Identification

1. 1	Manufacturer	HYUNDAI						
1. 2	Manufacturer's type designation	13BR-9	15BR-9	18BR-9	20BR-9	25BR-9	30BR-9	
1. 3	Drive : electric(battery or mains) ,diesel, petrol ,fuel gas, manual	electric	electric	electric	electric	electric	electric	
1. 4	Type of operation : hand, pedestrian, standing, seated, order - picker	standing	standing	standing	standing	standing	standing	
1. 5	Load capacity / rated load	Q kg	1,250	1,500	1,800	2,000	2,500	3,000
1. 6	Load center distance	c mm	500	500	500	500	500	500
1. 8	Load distance, center of drive axle to fork	x mm	189	271	489	484	612	682
1. 9	Wheelbase	y mm	1,150	1,315	1,500	1,500	1,695	1,795

Weights

2. 1	Service weight (inc. battery)	kg	2,145	2,369	2,358	2,559	2,965	3,269
2. 3	Axle loading, Fork retracted , Unloaded(Load end/Drive end)		778 / 1,357	804 / 1,485	737 / 1,601	830 / 1,669	929 / 1,976	1,055 / 2,214
2. 4	Axle loading, Fork extended , Loaded(Load end/Drive end)	kg	2,969 / 416	3,306 / 483	3,630 / 508	4,020 / 479	4,840 / 565	5,692 / 577
2. 5	Axle loading, Fork retracted , Loaded(Load end/Drive end)	kg	2,371 / 1,014	2,526 / 1,263	2,549 / 1,589	2,941 / 1,558	3,257 / 2,148	3,967 / 2,303

Wheels, Chassis

3. 1	Tires:solid rubber, polyurethane (Load / Drive / Caster)	P-Ure/Rub/Rub.	P-Ure/Rub/Rub.	P-Ure/Rub/Rub.	P-Ure/Rub/Rub.	P-Ure/Rub/Rub.	P-Ure/Rub/Rub.	
3. 2	Tires size, Load(Φ x width)	Φ254x100	Φ254x100	Φ254x100	Φ267x114	Φ267x114	Φ267x135	
3. 3	Tires size, Drive(Φ x width)	Φ306x127	Φ306x145	Φ306x145	Φ306x145	Φ382x142	Φ382x142	
3. 4	Tires size, Caster(Φ x width)	Φ178x73	Φ178x73	Φ178x73	Φ178x73	Φ204x76	Φ204x76	
3. 5	Wheels number : load x drive(driven wheels) x caster	2x1x2	2x1x2	2x1x2	2x1x2	2x1x2	2x1x2	
3. 6	Track width, Load end	b10*(mm)	970	970	970	994	1,060	1,075
3. 7	Track width, Drive end	b11 mm	613	613	613	613	689	689

Specification

Basic Dimensions

4. 1	Tilt angle, Mast/ fork carriage (forward / backward)	degrees	5/5	5/5	5/5	5/5	5/5	5/5
4. 2	Lowered mast height	h1 mm	1,991	1,991	1,991	1,991	2,025	2,025
4. 3	Free lift	h2 mm	232	232	232	232	248	248
4. 4	Lift height	h3 mm	3,000	3,000	3,000	3,000	3,000	3,000
4. 5	Extended mast height	h4 mm	4,025	4,025	4,025	4,025	4,030	4,030
4. 7	Overhead load guard (cab) height	h5 mm	2,260	2,260	2,260	2,260	2,294	2,294
4. 8	Step height	h7 mm	324	324	324	324	345	345
4. 9	Overall length (Reach In, With Fork)	l1 mm	2,106	2,189	2,156	2,311	2,373	2,403
4. 10	Length to face of forks (Reach In)	l2 mm	1,206	1,289	1,256	1,261	1,323	1,353
4. 11	Overall width (Load end / Drive end)	b1*1/b2 (mm)	1,070	1,070	1,070	1,116/1070	1,200	1,212/1,200
4. 12	Fork dimensions(hook type)	s / e / l mm	900x100x35	900x100x35	900x100x35	1,050x100x45	1,050x100x45	1,050x100x45
4. 13	Fork carriage ISO 2328, class/type A,B		II/A	II/A	II/A	II/A	II/A	III/A
4. 14	Fork-carriage width	b3*2 mm	790	790	790	790	772	772
4. 15	Overall fork width	b5*3 mm	732	732	732	732	730	730
4. 16	Distance between support arms/ loading surface	b4*1 (mm)	768	768	771	771	837	837
4. 17	Reach distance	l4 mm	365	447	665	665	807	877
4. 18	Ground clearance, loaded, under mast	m1 mm	106	106	106	106	130	130
4. 19	Ground clearance, centre of wheelbase	m2 mm	88	88	75	75	81	74
4. 20	Aisle width for pallets 1000x1200 crossways	Ast mm	2,647	2,740	2,763	2,781	2,895	2,956
4. 21	Aisle width for pallets 800x1200 lengthways	Ast mm	2,725	2,807	2,791	2,810	2,891	2,931
4. 22	Turning radius	Wa mm	1,438	1,596	1,775	1,775	1,980	2,077
4. 23	Length across wheel arms	l7 mm	1,530	1,695	1,880	1,880	2,080	2,180

Performance Data

5. 1	TTravel speed, (loaded / unloaded)	km/h	11.5	11	11	11	12	11
5. 2	Lift speed (loaded/ unloaded)	mm/s	300 / 500	340 / 550	320 / 550	300 / 470	280 / 470	220 / 430
5. 3	Lowering speed (loaded/unloaded)	mm/s	500 / 450	500 / 450	500 / 450	500 / 450	500 / 450	500 / 450
5. 7	Max gradient performance, S2 3min (loaded/unloaded)	%	19 / 32	27 / 50	25 / 49	23 / 45	15 / 30	13 / 2-
5. 9	Acceleration time, 10m over (loaded/ unloaded)		6.7	5.4	5.6	5.8	5.3	5.4
5. 10	Service brake		DISC	DISC	DISC	DISC	DISC	DISC

Motor

6. 1	Drive motor, rating S2= 60min	kW	4.5	6	6	6	6	6
6. 2	Lift motor, rating at S3=15% ((S2 5min))	kW	14	14	14	14	14	14
6. 3	Battery acc. to DIN 43531/ 35/ 36 A, B, C,no		no	no	no	no	no	no
6. 4	Battery voltage, nominal capacity K5(OPTION)48	V / AH	230 (198)	280 (335)	300(280,335)	335(300,365)	335(300,365)	365
6. 5	Battery weight(min)	kg	380 (370)	480 (560)	500(480,560)	560 (500)	560 (500)	580
6. 6	Battery dimensions L/WH	mm	994/270/582	994/378/582	994/378/582	994/378/582	994/378/582	994/378/582

Other Details

8. 1	Type of drive control		FET Inverter	FET Inverter	FET Inverter	FET Inverter	FET Inverter	FET Inverter
8. 2	Operating pressure for attachments	bar	130	130	130	130	130	130
8. 3	Oil volume for attachments	l / min	18	18	18	18	24	24

※Specifications are based on information available at time of printing and may change without notice.

*1 : TF Mast applied wide frame (10/13/15/18/20BR-9 : 100mm, 25/30BR-9 : 120mm extended)

*2 : TF Mast applied wide carriage (25/30BR-9 : 176mm extended)

*3 : TF Mast applied wide carriage (25/30BR-9 : 161mm extended)

Optional Items

•Fork (mm)

13/15/18BR-9 : 750 / 850 / 1050 / 1200 / 1350 / 1500

20/25BR-9 : 900 / 1000 / 1200 / 1350 / 1500 / 1650 / 1800

30BR-9 (Hook) : 900 / 1150 / 1200 / 1350 / 1500 / 1650 / 1800 / 2400

•Sideshift

•Carriage (Shaft type)

•Carriage (Narrow, Hook type)

•Tire

13/15/18BR-9

Option 1: All Urethane

Option 2: All Rubber

Option 3: All Non - Marking

Option 4: All Vulkollan

Option 5: Load Urethane Caster, Drive Non - Marking

20/25/30 BR-9

Option 1: All Urethane

Option 2: Load Urethane Caster, Drive Non - Marking

Option 3: All Vulkollan

•Cold Storage

(for -30°C cold working environments)

•M.C.V : 3-Spool (STD), 4-Spool

•Beacon Lamp (AMBER,RED,BLUE)

•Load Indicator

•Rear Work Lamp

•UL : ES

•High Head Guard

•Reverse Steering

MEMO