

You can visit the website
by scanning the QR code.



www.hyundai-mh.com / 2019. 09 Rev. 12

HYUNDAI
MATERIAL HANDLING



MOVING YOU FURTHER

22·25
30B-9F



Some photos may include optional features.

HYUNDAI
MATERIAL HANDLING

Your satisfaction is our priority!

Compact forklift with proven AC technology

Hyundai introduces the B-9F series 4 wheel battery forklift.

The B-9F series features excellent performance with enhanced control technology and reduced cost.



- More powerful performance - Dual drive
- Wet Disc Brake
- 3.5 inch LCD color monitor (including speedometer)
- Curve Control System
- Side Battery Extraction for easy change out (OPT)



Power & Performance

High Efficiency & Optimal Performance

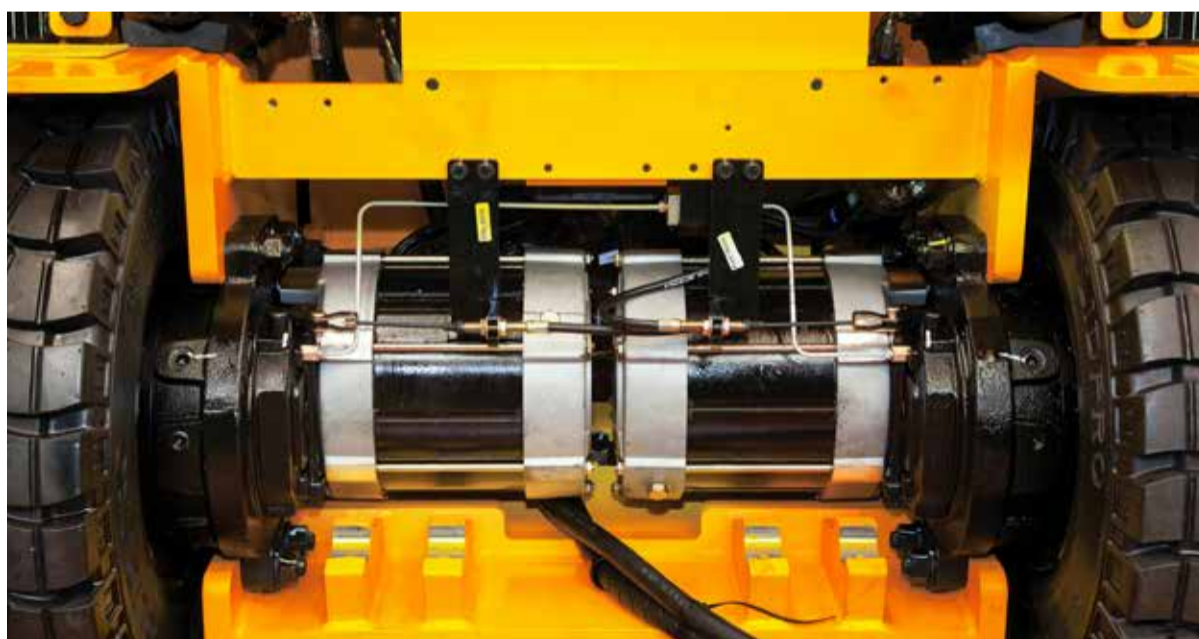
Efficient, smooth running and powerful performance make your work more productive.



Some photos may include optional features.

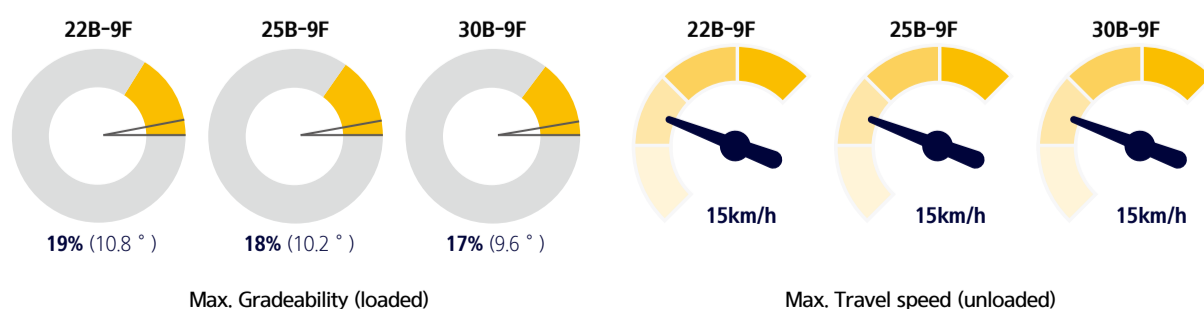
Powerful driving force - Dual drive system

The dual drive system, which consists of two independently operating drive motors on the left- and right-hand sides, ensures excellent drawbar pull and short turning radius. It provides powerful performance when turning on a contaminated road surface. Also, it enhances the efficiency of logistics in a narrow workplace.



Excellent gradeability and travel speed

It can perform stable operations and provide excellent gradeability and fast travel speed on any tough terrain or slope.



Strong and economical AC motor

The enclosed drive and pump motor with AC technology combine power, high maintenance intervals and excellent durability. The brushless AC motors offer improved efficiency and reduction maintenance cost.



Wet disk brake

The wet disk brake with semi-permanent lifespan can improve work efficiency with homogeneous braking power without overheating even in long repeated working conditions, and maintenance cost is relatively low due to no lining for regular replacement parts.



Curve control

Curve Control limits travel speed based on turning radius for a smooth, precise turning operation for the driver.



Vehicle Performance optimized for working condition

This function optimizes the performance of vehicle for the purpose of work, such as speed of operation, maximum working time and operator's proficiency. (High, Normal, Economy Mode)

Quick and efficient loading/unloading

The combination of a 17KW large-capacity pump motor whose output is controlled in proportion to the amount of operation of the lift lever and a hydraulic pump enables unloading of cargo quickly and safely.

Extension of battery life - Regenerative braking

When you take your foot off the pedal while driving, the drive motor changes its function to the generator. Charge the battery with the power generated at this time and increase the usage time. The electrical resistance of the motor during power generation also reduces the work fatigue and increases the service life of the brake system by stopping the equipment without operating the brake pedal.



Easy & Comfort

Optimized Ergonomics & Fast and Easy Maintenance

An ideal arrangement of components ensures easy access and convenience for maintenance.

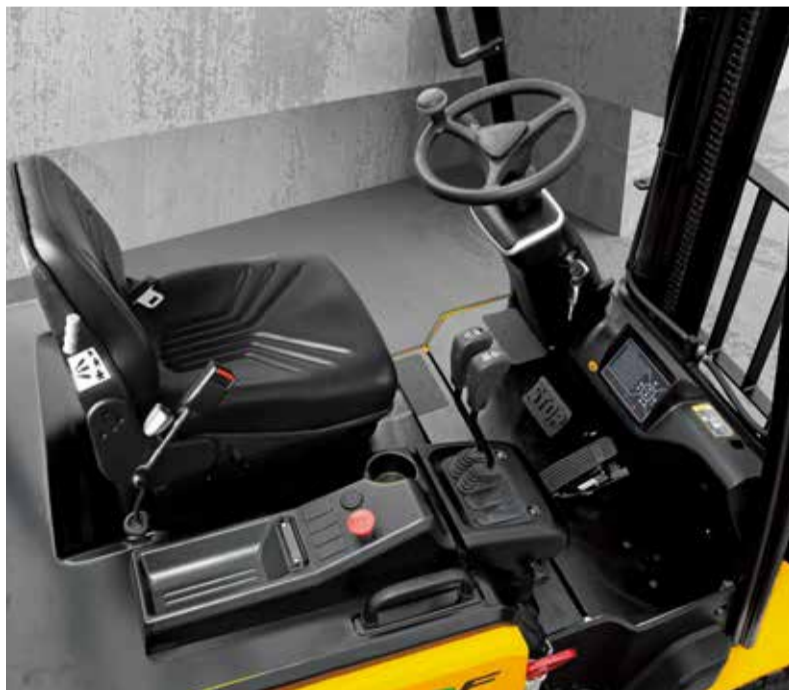


Some of the photos may include optional equipment.



Spacious operating space

The ergonomically designed operating space was made for more space, a wider field of view and operator comfort. The smooth lever and pedal operation, adjustable tilting handle, suspension seat and multi-functional large-size cluster provide comfortable and efficient operation. In addition, a 12V power socket is provided as an option.



Grammer Seat (OPT)

Easily adjustable suspension seat, based on a human engineering design, reduces operator fatigue and provides greater comfort.

- ELR(Emergency Locking Retractor) type seat belt as a standard
- Heat wire and head rest (OPT)

3.5 inch LCD color monitor

The LCD color monitor allows the operator to easily and efficiently control the machine. The monitor provides information about speed & accelerator level, steer angle & travel direction, battery discharge indicator, hour meter & working mode. The monitor also displays information about operation error, system fault, battery level, hour meter plus other various functions. It enables the operator to maintain the forklift in optimum operating condition.



Main functions

- Steering wheel position and travel direction
- Turtle mode
- Speed (Digital)
- Battery discharge indicator
- High temp warning lamp
- Wrench warning light
- Roll up
- ESC
- Performance / Scroll right
- Scroll up
- Menu / Scroll Left
- Enter
- Turtle / Scroll down



Optimized pedal position and floor mat

The position of accelerator and brake pedal have been optimized through human engineering.



Steering wheel position

The steering angle sensor can be used to predict the traveling direction of the equipment by displaying the symbol in real time on the large screen of the cluster.



Adjustable Tilting Handle

The steering column on the right can be easily adjusted by a lever.



Improved battery maintenance

The battery cover is designed as a full open type to improve the maintenance. Also this is equipped with a gas spring system for safe and easy maintenance.



Brake oil reservoir with level sensor

The enhanced brake oil reservoir, located in the upper left dash is equipped with an electronic level sensor and easily visible through the monitor.



Secure & Safety

Advanced Safety

The safely designed driver's space makes your operating more comfortable.



Some of the photos may include optional equipment.

Wide visibility for Safe Operation

The optimized lift cylinder array design provides a clear, wide field of vision for the operator. The adoption of a panorama mirror and rear camera(OPT) improve the rear side view, further enhancing safety.



Strong overhead guard

Exceeding ISO6055 regulations, the overhead guard offers great protection combined with excellent all around visibility.



Panoramic mirror

The panoramic mirror expands the driver's view when backing up.

Maximum travel speed limitation

By considering the working environment, the maximum speed can be set and limited from 10 km/h to 1km/h unit through the cluster.

Turtle Mode

When selecting the turtle mode while working in narrow and congested workplace, the travel speed is reduced at a preset speed.

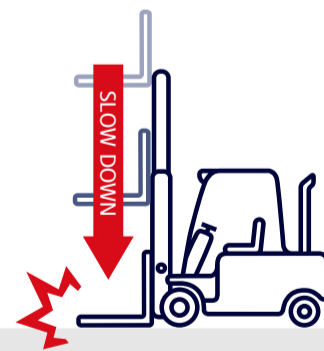
Safety features

The adoption of a high-sensitivity sensor and advanced safety system can prevent the safety accidents.



Anti Roll back system

Anti roll back system offers protection against the machine rolling back on a ramp in combination with exceptional ramp start capabilities.



Fork safety features

When the forks are being lowered, a down-control valve maintains the controlled speed. The down-safety valve prevents forks from dropping down in case of sudden damage of hydraulic line.



Operator Presence Sensing System (OPT)

When operator is not in seat the hydraulic lift and tilt controls and travel are locked out.



Safety lamps

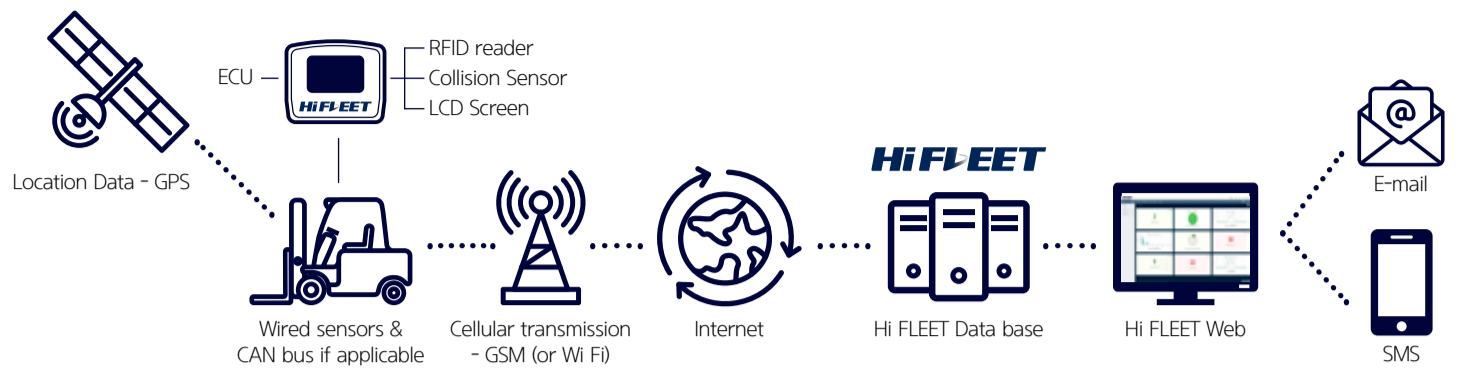
LED combination lights and halogen headlights offer the driver visibility in all circumstances.

Fleet Management System(Hi FLEET)(OPT)

Hi FLEET, Hyundai material handling's fleet management system, is the optimal operation solution for a fleet of forklifts. It connects driver and vehicle in real time.



You can see the video by scanning the QR code.



DRIVER MANAGEMENT

It is possible to certify drivers and manage their work through RFID, PIN password.

VEHICLE MANAGEMENT

You can check the operating time, battery status, and location information in real time.

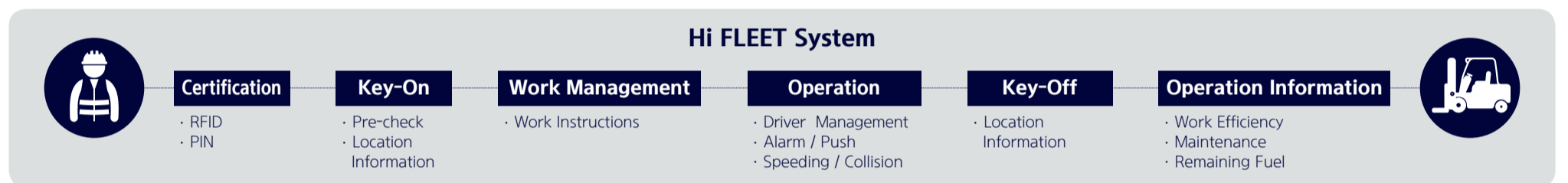


SAFETY MANAGEMENT

You can check the driver's conditions and vehicle status before starting work and manage the speed and collision.

MAINTENANCE

You can keep your vehicles in optimal condition by notifying the vehicle's maintenance interval and fault codes.



New 9 Series Mast Specification

22/25/30B-9F

22B-9F

Mast Type	Maximum Fork Height	Overall Height (Lowered)	free lift height			Tilt Angle		Loading Capacity (500mm LC) w/o side shift	Loading Capacity (500mm LC) with side shift	Vehicle Weight (Unloaded)	
			W/ Load Backrest	W/o Load Backrest	W/o Load Backrest (3/4-SPOOL)	Fwd	Bwd				
			(mm)	(mm)	(mm)	(°)	(°)				(kg)
2-STAGE LIMITED FREE LIFT	※V300	3005	2012	115	115	115	6	10	2200	2200	3943
	V330	3305	2162	115	115	115	6	10	2200	2200	3965
	V350	3505	2262	115	115	115	6	10	2200	2200	3979
	V370	3705	2412	115	115	115	6	10	2200	2200	4001
	V400	4005	2562	115	115	115	6	10	2200	2200	4023
	V430	4305	2712	115	115	115	6	6	2200	2200	4072
	V450	4505	2862	115	115	115	6	6	2200	2175	4102
	V470	4705	2962	115	115	115	6	6	2200	2125	4116
	V500	5005	3112	115	115	115	6	6	2150	2075	4138
2-STAGE FULL FREE LIFT	VF/VS295	2976	2012	832	1379	1379	6	6	2200	2200	3990
	VF/VS325	3276	2162	982	1529	1529	6	6	2200	2200	4023
	VF/VS345	3476	2262	1082	1629	1629	6	6	2200	2175	4045
3-STAGE FULL FREE LIFT	TF370	3705	1812	632	1122	1081	6	6	2200	2200	4120
	TF400	4005	1912	732	1222	1181	6	6	2200	2200	4141
	TF430	4305	2012	832	1322	1281	6	6	2200	2200	4164
	TF450	4505	2112	932	1422	1422	6	6	2200	2175	4185
	TF470	4705	2162	982	1472	1431	6	6	2200	2125	4197
	TF500	5005	2262	1082	1572	1531	6	6	1560	1530	4222
	TF550	5505	2462	1282	1772	1772	6	6	1450	1400	4262
	TF600	6005	2662	1482	1972	1972	6	6	1380	1260	4301
	TF650	6505	2862	1682	2061	1921	3	3	1330	1210	4340
	TF700	7005	3062	1882	2261	2121	3	3	1100	980	4377
	TS370	3705	1812	632	1122	1074	6	6	2200	2200	4120
	TS400	4005	1912	732	1222	1174	6	6	2200	2200	4141
	TS430	4305	2012	832	1322	1274	6	6	2200	2200	4164
	TS450	4505	2112	932	1422	1422	6	6	2200	2175	4185
	TS470	4705	2162	982	1472	1424	6	6	2200	2125	4197
	TS500	5005	2262	1082	1572	1524	6	6	1560	1530	4222
	TS550	5505	2462	1282	1772	1772	6	6	1450	1400	4262
TS600	6005	2662	1482	1972	1972	6	6	1380	1260	4301	
TS650	6505	2862	1682	2054	1914	3	3	1330	1210	4340	
TS700	7005	3062	1882	2254	2114	3	3	1100	980	4377	
4-STAGE FULL FREE LIFT	QF610	6115	2147	967	1514	1514	3	3	1500	1380	4515
	QF660	6615	2347	1167	1714	1714	3	3	1300	1180	4575
	QF700	7015	2447	1267	1814	1814	3	3	1000	880	4605
	QF745	7465	2597	1417	1964	1937	3	3	700	580	4651
	QF790	7915	2747	1567	2090	1937	3	3	500	380	4752

※ TF-Mast : Wide Visible 3-Stage Full Free Lift Mast with 1 Free Lift Cylinders.
 ※ TS-Mast : Wide Visible 3-Stage Full Free Lift Mast with 2 Free Lift Cylinders.

※ : Standard

25B-9F

Mast Type	Maximum Fork Height	Overall Height (Lowered)	free lift height			Tilt Angle		Loading Capacity (500mm LC) w/o side shift	Loading Capacity (500mm LC) with side shift	Vehicle Weight (Unloaded)	
			W/ Load Backrest	W/o Load Backrest	W/o Load Backrest (3/4-SPOOL)	Fwd	Bwd				
			(mm)	(mm)	(mm)	(°)	(°)				(kg)
2-STAGE LIMITED FREE LIFT	※V300	3005	2012	115	115	115	6	10	2500	2500	4138
	V330	3305	2162	115	115	115	6	10	2500	2500	4160
	V350	3505	2262	115	115	115	6	10	2500	2500	4174
	V370	3705	2412	115	115	115	6	10	2500	2475	4196
	V400	4005	2562	115	115	115	6	10	2500	2425	4218
	V430	4305	2712	115	115	115	6	6	2450	2375	4267
	V450	4505	2862	115	115	115	6	6	2400	2325	4297
	V470	4705	2962	115	115	115	6	6	2360	2285	4311
	V500	5005	3112	115	115	115	6	6	2350	2275	4333
2-STAGE FULL FREE LIFT	VF/VS295	2976	2012	832	1379	1379	6	6	2500	2500	4185
	VF/VS325	3276	2162	982	1529	1529	6	6	2500	2500	4218
	VF/VS345	3476	2262	1082	1629	1629	6	6	2500	2475	4240
3-STAGE FULL FREE LIFT	TF370	3705	1812	632	1179	1179	6	6	2500	2475	4315
	TF400	4005	1912	732	1279	1279	6	6	2500	2425	4336
	TF430	4305	2012	832	1379	1379	6	6	2450	2375	4359
	TF450	4505	2112	932	1479	1479	6	6	2400	2325	4380
	TF470	4705	2162	982	1529	1529	6	6	2350	2275	4392
	TF500	5005	2262	1082	1629	1629	6	6	1880	1850	4417
	TF550	5505	2462	1282	1829	1829	6	6	1550	1430	4457
	TF600	6005	2662	1482	2029	2029	6	6	1400	1280	4496
	TF650	6505	2862	1682	2061	1921	3	3	1350	1230	4535
	TF700	7005	3062	1882	2261	2121	3	3	1150	930	4572
	TS370	3705	1812	632	1179	1179	6	6	2500	2475	4315
	TS400	4005	1912	732	1279	1279	6	6	2500	2425	4336
	TS430	4305	2012	832	1379	1379	6	6	2450	2375	4359
	TS450	4505	2112	932	1479	1479	6	6	2400	2325	4380
	TS470	4705	2162	982	1529	1529	6	6	2350	2275	4392
	TS500	5005	2262	1082	1629	1629	6	6	1880	1850	4417
	TS550	5505	2462	1282	1829	1829	6	6	1550	1430	4457
TS600	6005	2662	1482	2029	2029	6	6	1400	1280	4496	
TS650	6505	2862	1682	2054	1914	3	3	1350	1230	4535	
TS700	7005	3062	1882	2254	2114	3	3	1150	930	4572	
4-STAGE FULL FREE LIFT	QF610	6115	2147	967	1413	1462	3	3	1600	1480	4710
	QF660	6615	2347	1167	1613	1662	3	3	1400	1280	4770
	QF700	7015	2447	1267	1713	1762	3	3	1100	980	4800
	QF745	7465	2597	1417	1964	1762	3	3	800	680	4846
	QF790	7915	2747	1567	2114	1762	3	3	600	480	4947

※ TF-Mast : Wide Visible 3-Stage Full Free Lift Mast with 1 Free Lift Cylinders.
 ※ TS-Mast : Wide Visible 3-Stage Full Free Lift Mast with 2 Free Lift Cylinders.

※ : Standard

30B-9F

Mast Type	Maximum Fork Height	Overall Height (Lowered)	free lift height			Tilt Angle		Loading Capacity (500mm LC) w/o side shift	Loading Capacity (500mm LC) with side shift	Vehicle Weight (Unloaded)	
			W/ Load Backrest	W/o Load Backrest	W/o Load Backrest (3/4-SPOOL)	Fwd	Bwd				
			(mm)	(mm)	(mm)	(°)	(°)				
2-STAGE LIMITED FREE LIFT	※V300	3005	2012	115	115	115	6	10	3000	3000	4585
	V330	3305	2162	115	115	115	6	10	3000	3000	4604
	V350	3505	2262	115	115	115	6	10	3000	3000	4621
	V370	3705	2412	115	115	115	6	10	3000	3000	4643
	V400	4005	2562	115	115	115	6	10	3000	3000	4665
	V430	4305	2712	115	115	115	6	6	3000	3000	4714
	V450	4505	2862	115	115	115	6	6	3000	2950	4743
	V470	4705	2962	115	115	115	6	6	3000	2875	4758
2-STAGE FULL FREE LIFT	VF/VS295	2976	2012	832	1379	1379	6	6	3000	3000	4605
	VF/VS325	3276	2162	982	1529	1529	6	6	3000	2950	4638
	VF/VS345	3476	2262	1082	1567	1567	6	6	3000	2875	4663
3-STAGE FULL FREE LIFT	TF370/TS370	3705	1812	632	1117	1081	6	6	3000	3000	4750
	TF400/TS400	4005	1912	732	1217	1181	6	6	3000	3000	4772
	TF430/TS430	4305	2012	832	1317	1281	6	6	3000	2950	4792
	TF450/TS450	4505	2112	932	1417	1417	6	6	3000	2875	4819
	TF470/TS470	4705	2162	982	1467	1431	6	6	2950	2825	4834
	TF500/TS500	5005	2262	1082	1567	1531	6	6	2250	2180	4860
	TF550/TS550	5505	2462	1282	1767	1767	6	6	1750	1570	4902
	TF600/TS600	6005	2662	1482	1967	1967	6	6	1450	1270	4942
	TF650/TS650	6505	2862	1682	2061	1921	3	3	1400	1220	4983
	TF700/TS700	7005	3062	1882	2261	2121	3	3	1200	1020	5023
	TF370/TS370	3705	1812	632	1117	1053	6	6	3000	3000	4750
	TF400/TS400	4005	1912	732	1217	1153	6	6	3000	3000	4772
	TF430/TS430	4305	2012	832	1317	1253	6	6	3000	2950	4792
	TF450/TS450	4505	2112	932	1417	1403	6	6	3000	2875	4819
	TF470/TS470	4705	2162	982	1467	1403	6	6	2950	2825	4834
	TF500/TS500	5005	2262	1082	1567	1503	6	6	2250	2180	4860
	TF550/TS550	5505	2462	1282	1767	1753	6	6	1750	1570	4902
TF600/TS600	6005	2662	1482	1967	1953	6	6	1450	1270	4942	
TF650/TS650	6505	2862	1682	2033	1893	3	3	1400	1200	4983	
TF700/TS700	7005	3062	1882	2233	2093	3	3	1200	1020	5023	
4-STAGE FULL FREE LIFT	QF610	6115	2147	967	1514	1514	3	3	1700	1520	5124
	QF660	6615	2347	1167	1714	1714	3	3	1500	1320	5184
	QF700	7015	2447	1267	1814	1814	3	3	1200	1020	5214
	QF745	7465	2597	1417	1964	1834	3	3	900	720	5260
	QF790	7915	2747	1567	1987	1834	3	3	700	520	5361

※ TF-Mast : Wide Visible 3-Stage Full Free Lift Mast with 1 Free Lift Cylinders.
 ※ TS-Mast : Wide Visible 3-Stage Full Free Lift Mast with 2 Free Lift Cylinders.

※ : Standard

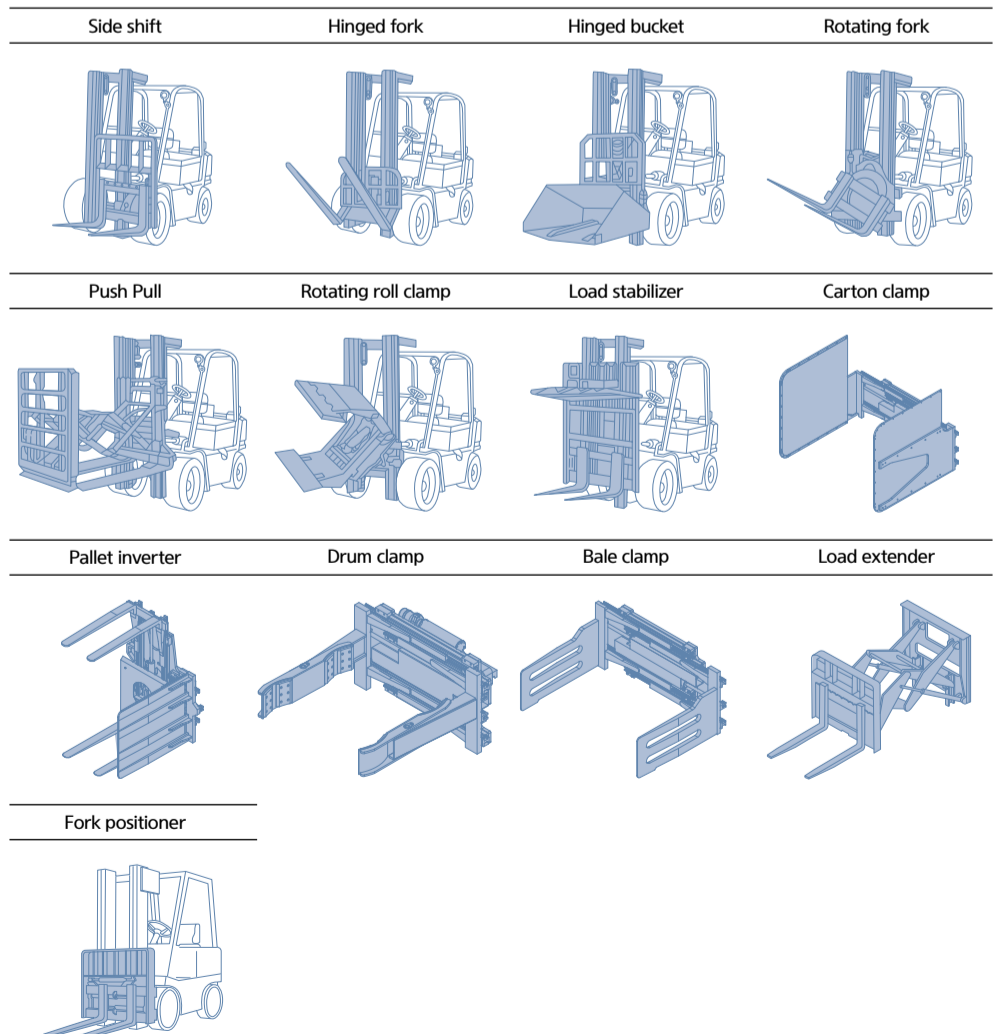
New 9 Series

Optional Items

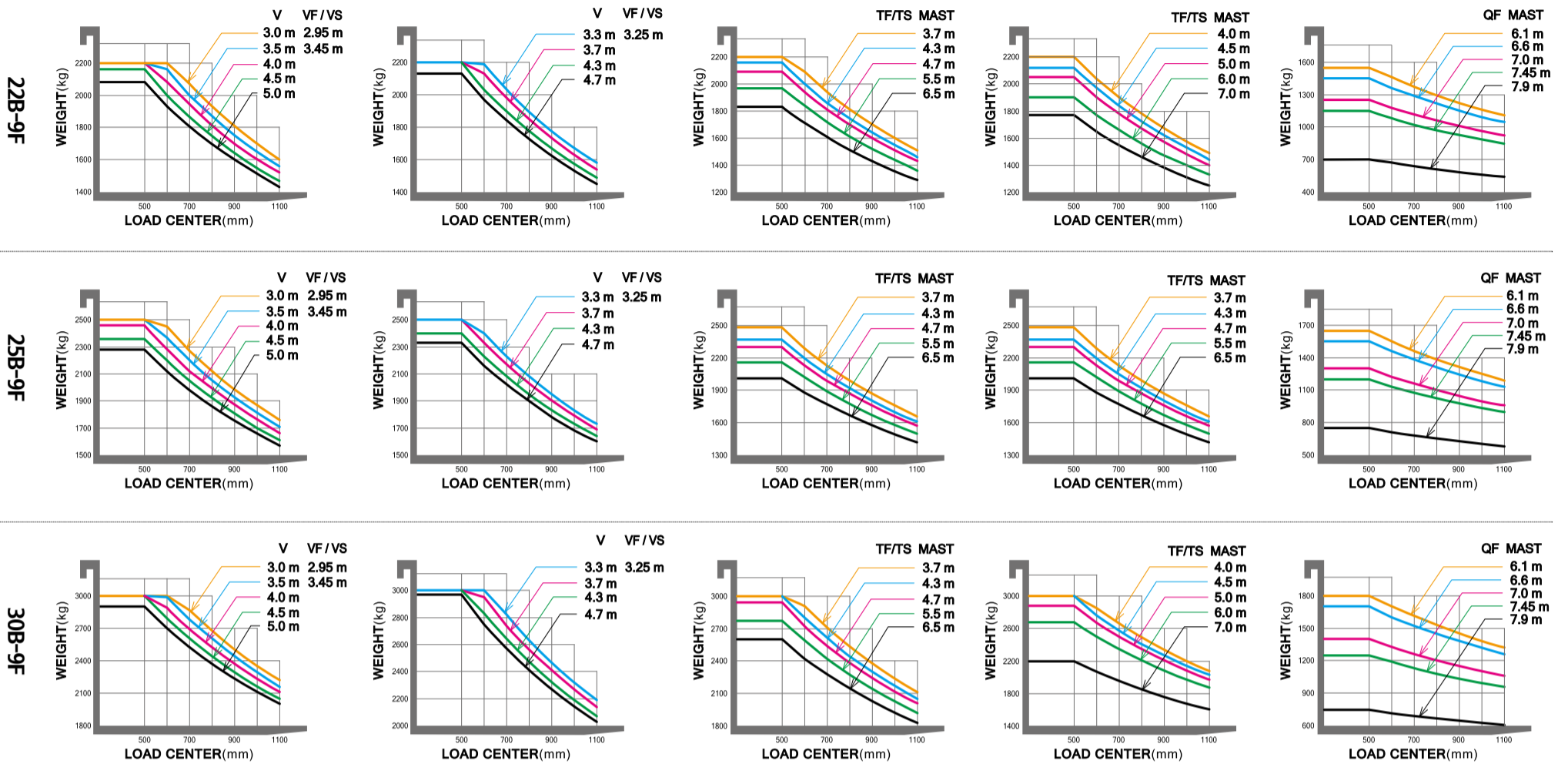
- Fork(mm)
 22/ 25B-9F : 900, 1000, 1050(STD), 1200, 1350, 1500, 1650, 1800, 2100
 30B-9F : 900, 1050(STD), 1150, 1200, 1350, 1500, 1650, 1800, 1970, 2120, 2300, 2400
- INTEGRAL SIDE SHIFT, FORK POSITIONER, INTEGRAL FORK POSITIONER SIDE SHIFT
- SEAT : Semi suspension seat (STD) Full suspension seat
 (Armrest, Backrest extension, Heating, Buckle S/W)
- TIRE : Solid(standard) / Non-marking/ Pneumatic
- Cold Storage : It can be applied in -30° working environment.
- M.C.V : 2-Spool (STD), 3-Spool, 4-Spool
- Any and all lamps are optional
- Side Mirror
- OPSS : Mast
- Cabin (Fine Top)

* All specifications and photos in this catalog are subject to change for quality improvement.

Attachments



Load Capacity



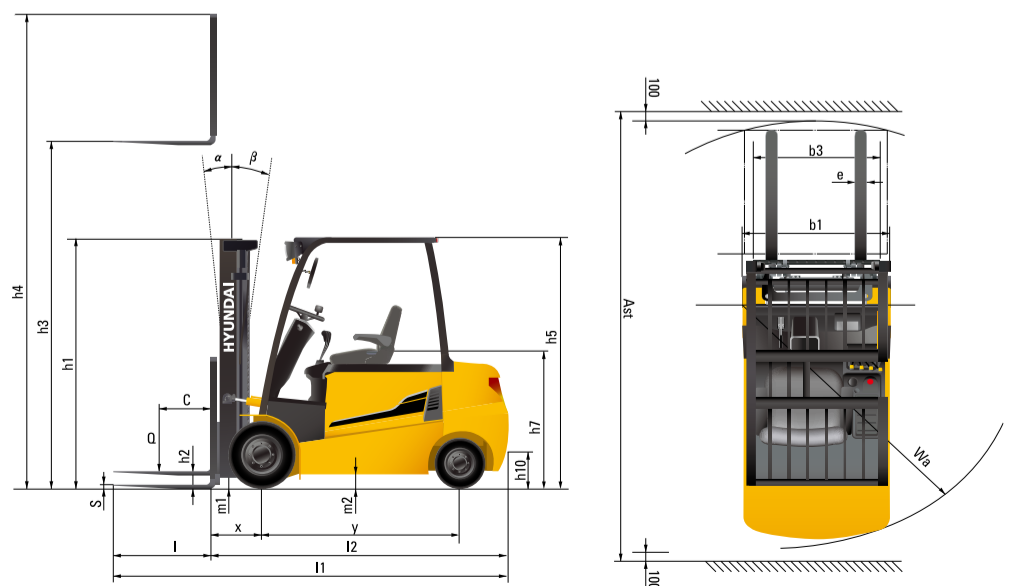
New 9 Series

Specification

Distinguishing mark					
1.1	Manufacturer (abbreviation)	Hyundai			
1.2	Manufacturer's type designation	22B-9F	25B-9F	30B-9F	
1.3	Drive	Electric (battery or mains)	Electric (battery or mains)	Electric (battery or mains)	
1.4	Type of operation	Seat type	Seat type	Seat type	
1.5	Load capacity / rated load	kg	2,200	2,500	3,000
1.6	Load center distance	c mm	500	500	500
1.8	Load center distance	x mm	458	458	458
1.9	Wheelbase	y mm	1,400	1,400	1,600
Weight					
2.1	Service weight	kg	3,965	4,160	4,604
2.2	Axle loading, loaded front/rear	kg	5,368 / 797	5,836 / 824	6,630 / 974
2.3	Axle loading, unloaded front/rear	kg	1,663 / 2,302	1,625 / 2,535	1,834 / 2,770
Tires, chassis					
3.1	Tires : Solid rubber(V), Superelastic(SE), Pneumatic(P), Polyurethane (PE), Non marking (N)	SE, P	SE, P	SE, P	
3.2	Tire size, front	23x9-10	23x9-10	23x9-10	
3.3	Tire size, rear	18x7-8	18x7-8	18x7-8	
3.5	Wheels, number front / rear (x = driven wheels)	2x / 2	2x / 2	2x / 2	
3.6	Tread, front	mm	993	993	993
3.7	Tread, rear	mm	980	980	980
Dimensions					
4.1	Tilt of mast/fork carriage forward/backward	degrees	6 / 10	6 / 10	6 / 10
4.2	Height, mast lowered	h1 (mm)	2,012	2,012	2,012
4.3	Free lift	h2 (mm)	115	115	115
4.4	Lift height	h3 (mm)	3,005	3,005	3,005
4.5	Height, mast extended	h4 (mm)	4,185	4,185	4,185
4.7	Height of overhead guard (cabin)	h5 (mm)	2,230	2,230	2,230
4.8	Seat height / stand height rel. to sip	h7 (mm)	1,275	1,275	1,275
4.12	Coupling height	h10 (mm)	325	325	325
4.19	Overall length	l1 (mm)	3,345	3,345	3,553
4.20	Length to face of forks	l2 (mm)	2,295	2,295	2,503
4.21	Overall width	b1 (mm)	1,200	1,200	1,200
4.22	Fork dimensions (l x w x t)	l x w x t (mm)	45x100x1,050	45x100x1,050	45x122x1,050
4.23	Fork carriage iso 2328		II/A	II/A	II/A
4.24	Fork-carriage width	b3 (mm)	1,102	1,102	1,102
4.31	Ground clearance, below mast, loaded	m1 (mm)	117	117	117
4.32	Ground clearance, center of wheelbase	m2 (mm)	130	130	130
4.33	Cross-passage width (pallet 1000 x 1200)	Ast (mm)	3,637	3,637	3,829
4.34	Aisle width of pallets 800 x 1200 crossways (w x l)	Ast (mm)	3,803	3,803	4,009
4.35	Turning radius	Wa (mm)	1,939	1,939	2,164

Performance data					
5.1	Travel speed, unloaded	km/h	15	15	15
5.2	Lift speed, loaded / unloaded	mm/s	350 / 500	340 / 500	290 / 400
5.3	Lowering speed, loaded / unloaded	mm/s	500 / 270	500 / 270	500 / 270
5.6	Max. drawbar pull, loaded / unloaded	N	1228.9 / 1277.7	1288.9 / 1270.5	1273.6 / 1267.5
5.8	Gradeability, loaded / unloaded	% (°)	19 (10.8)	18 (10.2)	17 (9.6)
5.10	Service brake		Hydraulic	Hydraulic	Hydraulic
Motors					
6.1	Drive Motor, 60 Min Rating	kW	4.7x2	4.7x2	4.7x2
6.2	Hydraulic Motor, 15% Rating	kW	17	17	17
6.4	Battery voltage / Rating capacity	V/Ah	48 / 600	48 / 600	48 / 600
6.5	Battery weight	kg	1,020	1,020	1,150
	Battery installation space (l / w / h)	mm	1,035 / 806 / 540	1,035 / 806 / 540	1,035 / 1,000 / 540
Addition data					
8.1	Type of drive control		AC	AC	AC

Dimension



* All specifications in this catalog are subject to change according to the optional items.