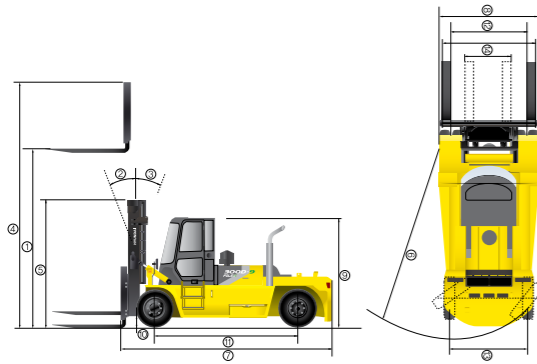


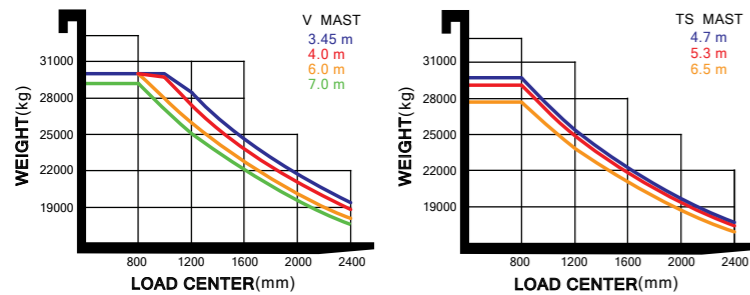
## Dimension



## Mast Specification

Mast Type	Maximum Fork Height (mm)	Overall Height (Lowered) (mm)	Tilt Angle (deg) Fwd / Bwd	Load Capacity (800mm LC) (kg)	Truck weight (unloaded) (kg)	
2- Stage Limited free lift	V345	3,486	12/10	30,000	38,236	
	V400	4,040	12/10	30,000	38,815	
	V450	4,540	4,120	12/10	30,000	39,092
	V500	5,040	4,370	12/10	30,000	39,384
	V550	5,540	4,620	12/10	30,000	39,664
	V600	6,040	4,870	12/10	30,000	40,248
	V650	6,540	5,120	12/10	29,800	40,560
	V700	7,040	5,370	12/10	29,200	40,850
3- Stage full free lift	TS470	4,712	10/10	30,000	41,320	
	TS500	5,012	10/10	29,400	41,567	
	TS530	5,312	3,600	10/10	29,000	41,774
	TS560	5,612	3,700	10/10	28,700	41,945
	TS600	6,016	3,835	10/10	28,300	42,177
	TS650	6,512	4,000	10/10	27,700	42,471

## Load Capacity



## Optional Items

- Fork (height x width x length)
- 110 x 250 x 2,450(STD) / 110 x 250 x 1,800 / 110 x 250 x 2,700 /
- 110 x 250 x 3,150 / 110 x 250 x 3,650
- Seat: leather + hot-wire, air suspension + hot-wire
- Sliding carriage
- Hi-MATE

\* All specifications and photos in this catalog are subject to change without prior notice for quality improvement.  
\* The photos in this catalogue may include optional equipment.

## Specification

Distinguishing mark		
1.1	Manufacturer (abbreviation)	Hyundai
1.2	Manufacturer's type designation	300D-9
1.3	Drive : electric (battery or mains), diesel, petrol, fuel gas	DIESEL
1.4	Type of operation: hand, pedestrian, standing, seated, order-picker	seated
1.5	Load capacity / rated load	kg 30000
1.6	Load center distance	mm 800
1.8	Load distance, center of drive axle to fork	mm 1271
1.9	Wheelbase	mm 4250
Weight		
2.1	Service weight	kg 41320
2.2	Axle loading, loaded front/rear	kg 66825/4495
2.3	Axle loading, unloaded front/rear	kg 22418/18902
Tires, chassis		
3.1	Tires : solid rubber, superelastic, pneumatic, polyurethane	P
3.2	Tire size, front	14.00-24-32PR
3.3	Tire size, rear	14.00-24-32PR
3.5	Wheels, number front / rear (x = driven wheels)	4x2
3.6	Tread, front	mm 2212
3.7	Tread, rear	mm 2140
Dimensions		
4.1	Tilt of mast/fork carriage forward/backward	degree 10/10
4.2	Height, mast lowered	⑤ mm 3400
4.3	Free lift	mm 746
4.4	Lift height	① mm 4712
4.5	Height, mast extended	④ mm 6500
4.7	Height of overhead guard (cabin)	⑨ mm 3278
4.8	Seat height / stand height rel. to sip	mm 2150
4.12	Coupling height	⑫ mm 528
4.19	Overall length	⑦ mm 8812
4.20	Length to face of forks	⑪ mm 6520
4.21	Overall width	⑧ mm 3080
4.22	Fork dimensions	mm 110x250x2450
4.23	Fork carriage iso 2328, class / type a, b	-
4.24	Fork-carriage width	mm 2950
4.31	Ground clearance, below mast, loaded	⑩ mm 290
4.32	Ground clearance, center of wheelbase	mm 250
4.33	Aisle width for pallets 1000 x 1200 crossways (l x w)	mm 9626
4.34	Aisle width of pallets 800 x 1200 crossways (w x l)	mm 9626
4.35	Turning radius	⑥ mm 5864
4.36	Smallest pivot point distance	mm 2030
Performance data		
5.1	Travel speed, loaded / unloaded	km/h -/30.8
5.2	Lift speed, loaded / unloaded	mm/s 250/280
5.3	Lowering speed, loaded / unloaded	mm/s 400/300
5.5	Drawbar pull, loaded / unloaded	N -
5.6	Max. drawbar pull, loaded / unloaded	N 225798/212981
5.7	Gradeability, loaded / unloaded	% -
5.8	Max. gradeability, loaded / unloaded	% 30.4/31.1
5.9	Acceleration time, loaded / unloaded	s -
5.10	Service brake	-
Combustion-engine		
7.1	Engine manufacturer / type	Cummins/QSL9
7.2	Engine power acc. to iso 1585	kW/rpm 204.5/2200
7.3	Maximum torque	kgf-m/rpm 124/1500
7.4	No. of cylinders / displacement	EA/cc -/8849
7.5	Fuel consumption acc. to vdi cycle	l/h 25
Addition data		
8.1	Type of drive control	AC Power Shift
8.2	Operating pressure, system / attachments	bar 240/160
8.3	Oil volume for attachments	LPM 270
8.4	Sound level at the driver's ear according to din 12053	dB (A) 76.2
8.5	Trailer coupling, type din	Pin

# 300D-9

MOVING YOU FURTHER

HYUNDAI CONSTRUCTION EQUIPMENT



**HYUNDAI**  
CONSTRUCTION EQUIPMENT

Head Office (Sales office)

First tower, 55, Bundang-ro, Bundang-gu, Seongnam-si, Gyeonggi-do, Korea

# Your satisfaction is our priority!

The newly designed 4 wheel counterbalance trucks provide every operator comfortable driving, increased productivity and easy maintenance.

## New Diesel Forklift with Proven Quality and Advanced Technology

- Maximum performance
- Spacious operator's cab
- Load indicator
- OPSS for safe operation
- Easy serviceability
- Hi-MATE (Remote Management System)
- 4.3 Inch Color LCD (Centralized Information Display)



■ Photo may include optional equipment.

# High Efficiency & Optimal Performance



Powerful engine and high technology systems provide you with enhanced performance and highest productivity.

**300D-9**



■ Photo may include optional equipment.

## Cummins QSL9 Engine

204kW/2,200rpm  
124kgf.m/1,500rpm



### Powerful Engine

The six cylinders turbo-charged engine is built for power, reliability and economy. This engine meets EPA Tier 4 and EU stage IV emission regulation.

### Variable Geometry Turbo

Unique sliding nozzle design controls EGR flow and boosts response at all engine speeds - avoids the need for twin turbo complexity

### New CM2350

Improved microprocessor and memory

### Clean Crankcase Filter

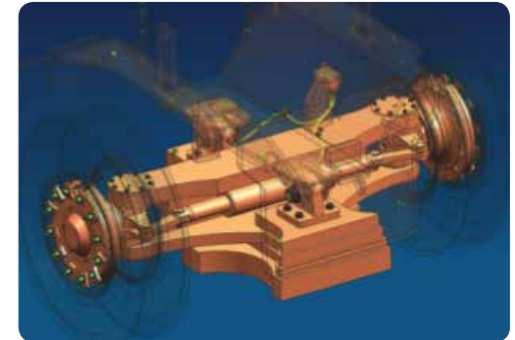
Removes crankcase emissions and eliminates oil drips or mist for ultra-clean engine operation



### ZF Full-automatic Transmission

Full-automatic transmission gives easy, convenient handling and soft, smooth shifting. The operator can select two kinds of automatic modes.(1st 3rd, 2nd 3rd)

Improved Torque converter with stator free wheel provides you fuel efficiency compared with old model for 4%.



### Fully Hydrostatic Power Steering

The hydraulic steering system always guarantees smooth and flexible steering, preventing over-run and kick-back.

### Load Sensing System

Only flow required on cylinders is supplied. It makes energy saving. (No excessive flow)



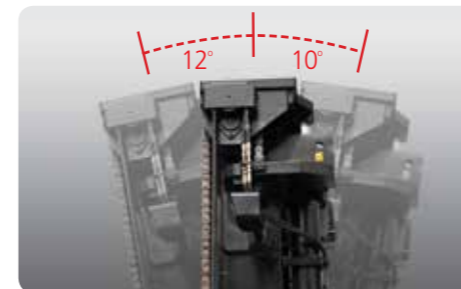
### Kessler Durable drive axle

The planetary reduction drive axle smoothly delivers desired torque to the drive wheels.



### Wet Disc Brake System

The wet disc brake system is virtually maintenance free and is enclosed to protect from dust and water.



### Increased mast tilting angle

Utilizing the mast tilting angle of 12 degrees forward and 10 degrees backward, the operator can perform loading and unloading jobs safely and rapidly.



Max.Gradeability (loaded)		Max.Travel Speed (Unloaded)	
Model	%	Model	Km / h
300D-9	30.4	300D-9	30.8

### Faster Travel Speed & Better Gradability

The powerful engine provides greater acceleration, better gradability and faster travel speed on any tough terrains or slopes.

# Best Convenience & Optimized Ergonomics



The ergonomically designed cabin provides full support and comfort to the operator.

**300D-9**



■ Photo may include optional equipment.



### Quick Response of Operating Control Levers

Only minimal operator's effort is required for precise, safe and productive control.

(5-Lever , 6-Function : Standard)

(5-Lever , 7-Function : Option)



### Ergonomically positioned pedals

Based on human engineering the accelerator, brake and inching pedals are optimally positioned for the operator's convenience.



### Adjustable steering column

Steering handle is adjustable depending on the operator's body shape. Adjustability of steering column makes you more comfortable.

### Integrated Communication Controller

The convenience of the operator is further enhanced by applying advanced communication devices. (Bluetooth hands-free, communication with a mobile phone and radio, USB/MP3 audio control)



Bluetooth Hands Free Socket (Option)

Centralized Instrument switch Panel



### Luxury(Air-suspension+Heat+HeadRest) seat(Option)

An attractive and adjustable seat, based on a human engineering design, provides great comfort, safety and durability



### High-output Air Conditioner & Heater

An air conditioner with integrated the condenser is mounted on upper side of the cabin to make a wide room in the cabin. And an air conditioner with high-output and heater always provide you with comfortable environment when you work.

# Advanced Safety



The safely designed driver's space makes your operating more comfortable.

**300D-9**



### Engine Control Mode

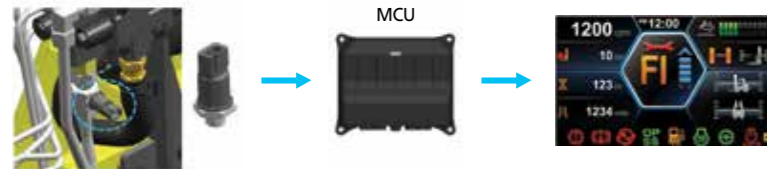
According to operating load, the operator can select engine mode by changing side panel switch.  
 STD Mode : Fuel reduction mode for lightduty operating load  
 POWER Mode : Heavy-duty or operating at slope



### Adjustable Engine Low Idle RPM

While engine runs, low idle rpm can be increased by unit of 25rpm and it keeps previously set rpm when engine restarts.

Load-Sensor (Pressure Sensor)



### Load indicator

The optional load indicator displays the load weight in the monitor.  
 The load sensor reduces the time to check loaded weight and the alarm alerts the driver when overloaded.

### OPSS (Operator Presence Sensing System)

When the operator is not in the seat all mast and drive movements are impossible.

Lift Lock   Tilt Lock   Drive Lock   Parking



■ Photo may include optional equipment.



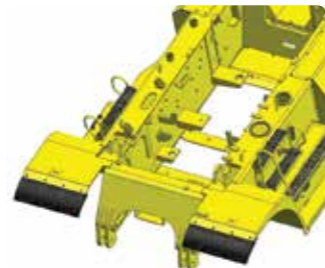
### Up-to-date Cooling System

The minimum fuel consumption and low noise are available by applying hydraulic cooling fan sensing intake air temperature, transmission oil temperature, coolant temperature and hydraulic temperature.



### Cabin Tilting Automatic System

Cabin tilting automatic system makes servicing of all power train components quick and easy. An electrically assisted hydraulic actuated cylinder tilts operator cabin to left side about 65 degrees for easy access to inside of truck components.



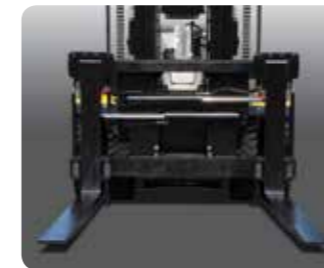
### Front Mud Guard

The mud guard prevents foreign materials rebounding from the tires to keep the equipment clean.



### Air Compressor

Inside of Cabin and the equipment can be cleaned easily by the air compressor.



### Highly durable Carriage

The carriage is very strong by applying the high tensile structural steel which has an excellent durability



### Large footboard & Handle

Wide open: step offers convenience and safety when entering and exiting the truck.



### Excellent Night Work

- Various position of work lamp provides the operator more comfortable and safe operating environments.  
 - Front : fender(2), mast(4) - Rear : cab(2)  
 - LED Rear Combination Lamp



# Fast and Easy Maintenance

An ideal arrangement of components ensures easy access and convenience for maintenance.

**300D-9**



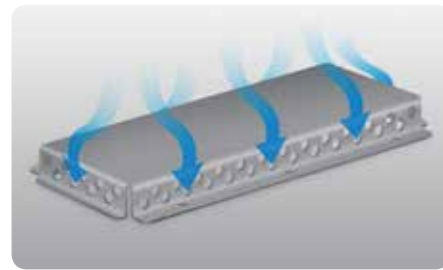
## Large Engine Hood

Highly accessible engine compartment assures fast and efficient maintenance.



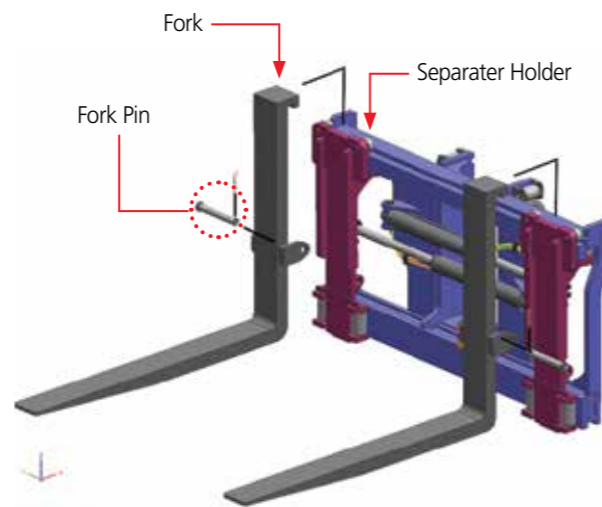
## Easy Change Air Cleaner

This air filter is readily accessible for cleaning or replacement.



## Cabin Air Fresh Filter

The internal pressure is maintained to be slightly higher than that of outside to exclude dust and to reduce noise levels.



## Separator holder type Fork Carriage (Standard Type)

To improve handling and easily switch forks and other attachment Separator holder system is adopted as option. It is possible to install various attachments like coil ram easily.



## Hi-MATE (Remote Management System)

Hi-MATE, Hyundai's proprietary remote management system, provides operators and dealer service personnel access to vital service and diagnostic information on the machine from any computer with internet access.



## Rear View Camera

The rear view camera makes the operation more easy and convenient. And it supports 4camera channels.



■ Photo may include optional equipment.



## Master Switch

A master switch disconnects the battery power to protect the electrical system from excess electrical drainage.



## Maintenance Management Display



## Engine Start Limit