

50/70D-9

Diesel Counterbalance Trucks

MOVING YOU FURTHER

HYUNDAI CONSTRUCTION EQUIPMENT



*Some of the photos may include optional equipment.

 **HYUNDAI**
CONSTRUCTION EQUIPMENT

PLEASE CONTACT

www.hyundai-ce.com

2017 . 04 Rev. 3

 **HYUNDAI**
CONSTRUCTION EQUIPMENT

Your satisfaction is our priority!

Hyundai introduces a new line of 9-series diesel forklift trucks.

The newly designed 4 wheel counterbalance trucks provide every operator comfortable driving, increased productivity and easy maintenance.

New Diesel Forklift with Proven Quality and Advanced Technology

- Maximum performance
- Spacious operator's cab
- Switch type parking brake
- 4.3 inch LCD color cluster
- Truck inclination warning system
- OPSS System for safe operation
- Easy serviceability
- Max speed limit function
- Password starting system
- Weight indicator (Optional)
- FATC (Full Automatic Temperature Control) (Optional)



*Some of the photos may include optional equipment.

High Efficiency & Optimal Performance



Powerful engine and high technology systems provide you with enhanced performance and highest productivity.

50/70D-9



*Some of the photos may include optional equipment.

CUMMINS QSF3.8 Engine 102PS/2,200rpm 42.3kgf · m/1,600rpm



Powerful Engine

The four cylinders turbo-charged engine is built for power, reliability and economy. This engine meets EPA Tier 4 and EU stage IV emission regulation.

Excellent Fuel Efficiency

Fuel consumption rate is improved than previous model.

SCR(Selective Catalytic Reduction)

EGR(Exhaust Gas Recirculation)

- High torque at low speeds
- Excellent transient behavior



Highly Durable Drive Axle

The strengthened drive axle separable from transmission ensures low vibration and easy maintenance. The wet disc type brake is applied for easy operation, smooth response and maintenance free.



Negative Parking brake system

Multi wet discs type parking brake provides effective brake performance and easy operation by switch.



Highly Durable Transmission

Powershift transmission of forward 2 stages and reverse 2 stages provides fast travel speed and quiet travel under any heavy load condition, and enhances work efficiency.

The clutch protection system prevents excessive use of inching as well as minimizes change-impact.



Fully hydrostatic power steering

The hydraulic steering system always guarantees smooth and flexible steering, preventing overrun and kick-back.



Increased Mast Tilting Angle

The mast tilting angle of 15 degrees forward and 10 degrees backward, the operator can perform loading and unloading jobs safely and rapidly.



Travel Speed (MAX)

Model	km/h (mph)
50D-9	33.9 (21)
70D-9	33.6 (20.8)

Gradeability (MAX)

Model	%
50D-9	58.7
70D-9	44.4

Faster Travel Speed & Better Gradability

The powerful engine provides greater acceleration, better gradability and faster travel speed on any tough terrains or slopes.

Best Convenience & Optimized Ergonomics



A design based on human engineering relieves fatigue and increases operator's efficiency.

50/70D-9



*Some of the photo may include optional equipment.

Spacious Operator Cabin

The newly designed cabin was conceived for more space, a wider field of view and operator comfort.



Centralized Instrument Switch Panel



Quick Response of Operating Control Levers

Only minimal operator's effort is required for precise, safe and productive control.
(4 Lever : Standard), (2/3/5 Lever : Optional)



Optimized Pedal Position



Multi-Function Switch Lever



Grammer Seat (STD)

An attractive and adjustable seat, based on a human engineering design, provides great comfort. And the angle of the armrest can be adjusted to reduce the fatigue of the driver.

- Applied the weight of the driver (45~170kg)
- ELR type seat belt standard
- Heater and Head Rest (Optional)



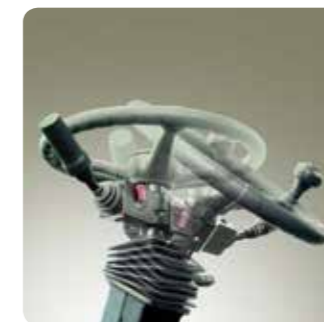
New design and Concentrated Cluster Panel

1	Parking lamp	9	Hour meter	17	Rear wheel angle (optional)
2	Engine check warning lamp	10	Odometer	18	Right turn signal indicator lamp
3	High beam indicator lamp	11	Outside temperature indicator	19	Engine coolant temperature gauge
4	Operator presence indicator lamp	12	Air-con setting temp. indicator	20	Transmission oil temperature gauge
5	Seat belt warning lamp	13	Vehicle tilt angle indicator	21	Fuel gauge
6	Left turn signal indicator lamp	14	Clock	22	Speed gauge
7	Engine RPM indicator	15	T/M information display		
8	Weight indicator (optional)	16	Urea level gauge		



Full Automatic Temperature Control

The system automatically controls the temperature of a cabin to maintain the optimal working environment.



Adjustable Steering Wheel

Steering wheel with horn button can be adjusted by a lever on the right-hand side for the most comfortable operator position.



Advanced Safety



Safety and durability are priorities in design of the equipment.

50/70D-9



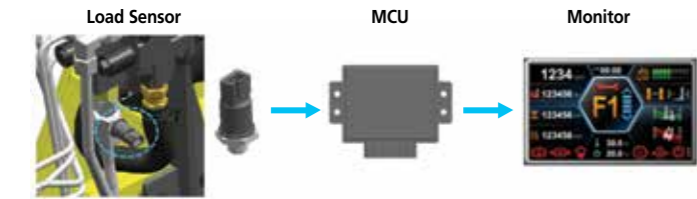
Electrical Interlock

When parking brake engaged travel electric power intercepted. Even if when forward or reverse lever operated, vehicle can't be traveled.



Adjustable Engine Low Idle RPM

While engine runs, low idle rpm can be increased by unit of 25rpm and it keeps previously set rpm when engine restarts.



Weight Indicator (Optional)

The optional load indicator displays the load weight on the monitor. The load sensor reduces the time to check loaded weight and the alarm alerts the driver when overloaded.

Fork Safety Features

When the forks are being lowered, a down-control valve maintains the controlled speed. The down-safety valve prevents forks from dropping down in case of sudden damage of hydraulic line.

OPSS (Operator Presence Sensing System)

All mast and drive movements stop functioning when the operator is not in the seat.

- Lift Lock
- Tilt Lock
- Drive Lock
- Parking



*Some of the photos may include optional equipment.



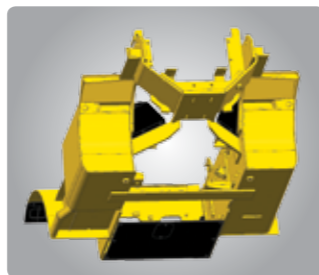
Efficient Cooling System

Aluminum radiator provides excellent cooling capacity with improved air flow.



Large Footboard & Hand Grip

Wide "open" step offers convenience and safety when entering and exiting truck.



Rear Tire Cover/Under Cover (Optional)

The cover protect the engine and components from damage caused foreign substances.



Easy and Safe Shift Lever

A single lever on the left side of the steering column gives the operator fast, easy control of direction. The lever must be in the neutral position before the engine can be started.



Bright, Protected Headlights / Full lighting

In order to provide the driver exceptional visibility in all circumstances, work lamps are standard both to the front and to the back.



Expansion Bellows

Sufficient length of bellows pipe between exhaust pipe and engine exhaust manifold certifies the durability of muffler and exhaust pipe.



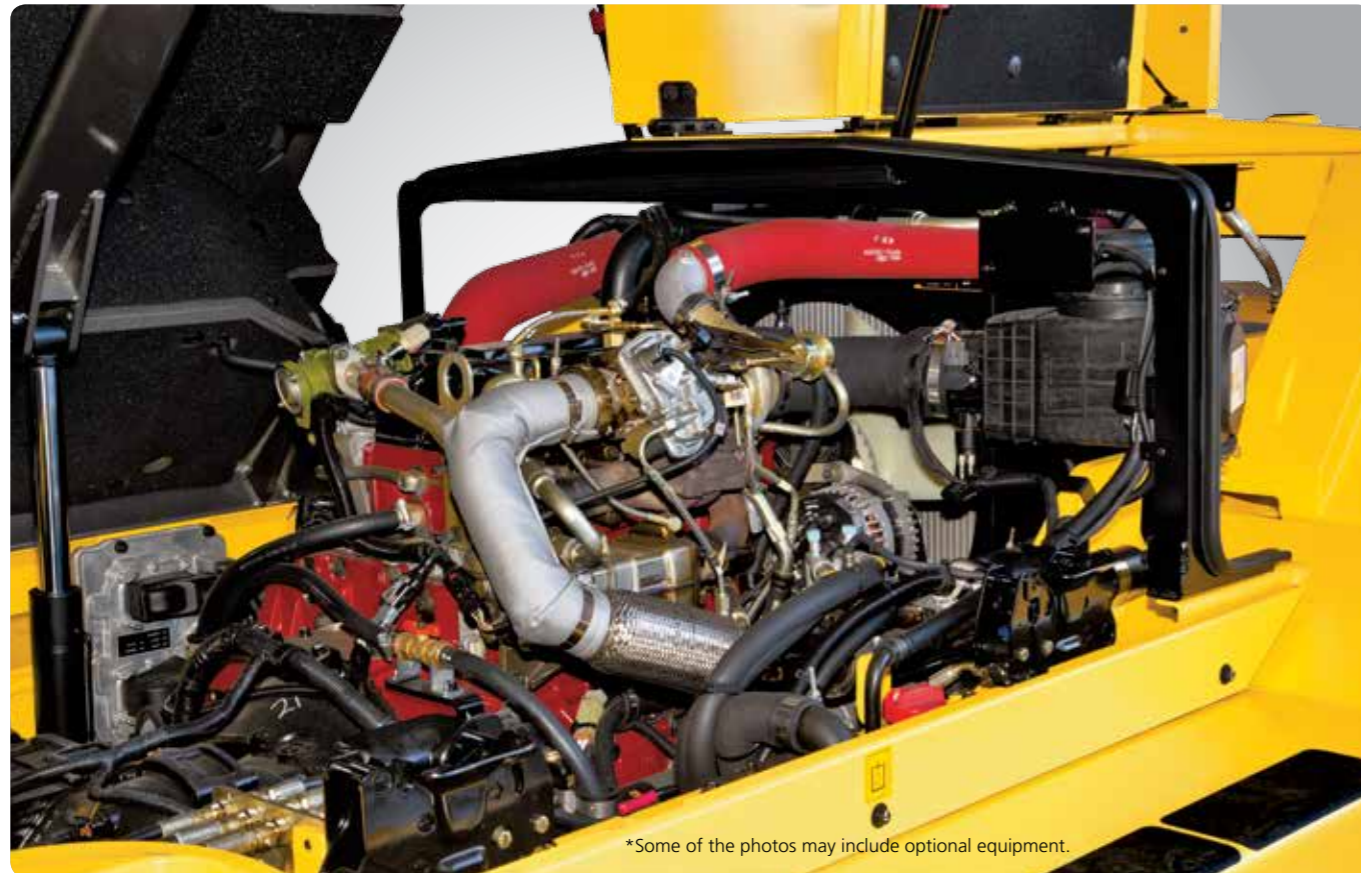
Grease Fittings

Grease fittings are installed for fast access to steering axle center pin when doing your service checks.

Fast and Easy Maintenance

An ideal arrangement of components ensures easy access and convenience for maintenance.

50/70D-9



*Some of the photos may include optional equipment.

Enlarged Engine Hood Cover

Highly accessible engine compartment assures fast and efficient maintenance.



Cab Tilt System

The cab tilt system makes servicing of all powertrain components quick and easy. An electrically assisted hydraulic actuated cylinder tilts operator cab to left side about 54 degrees for access to open truck components.



Mechanic friendly Pre-Fuel Filter Replacement

Highly accessible engine compartment allows for quick replacement of filters.



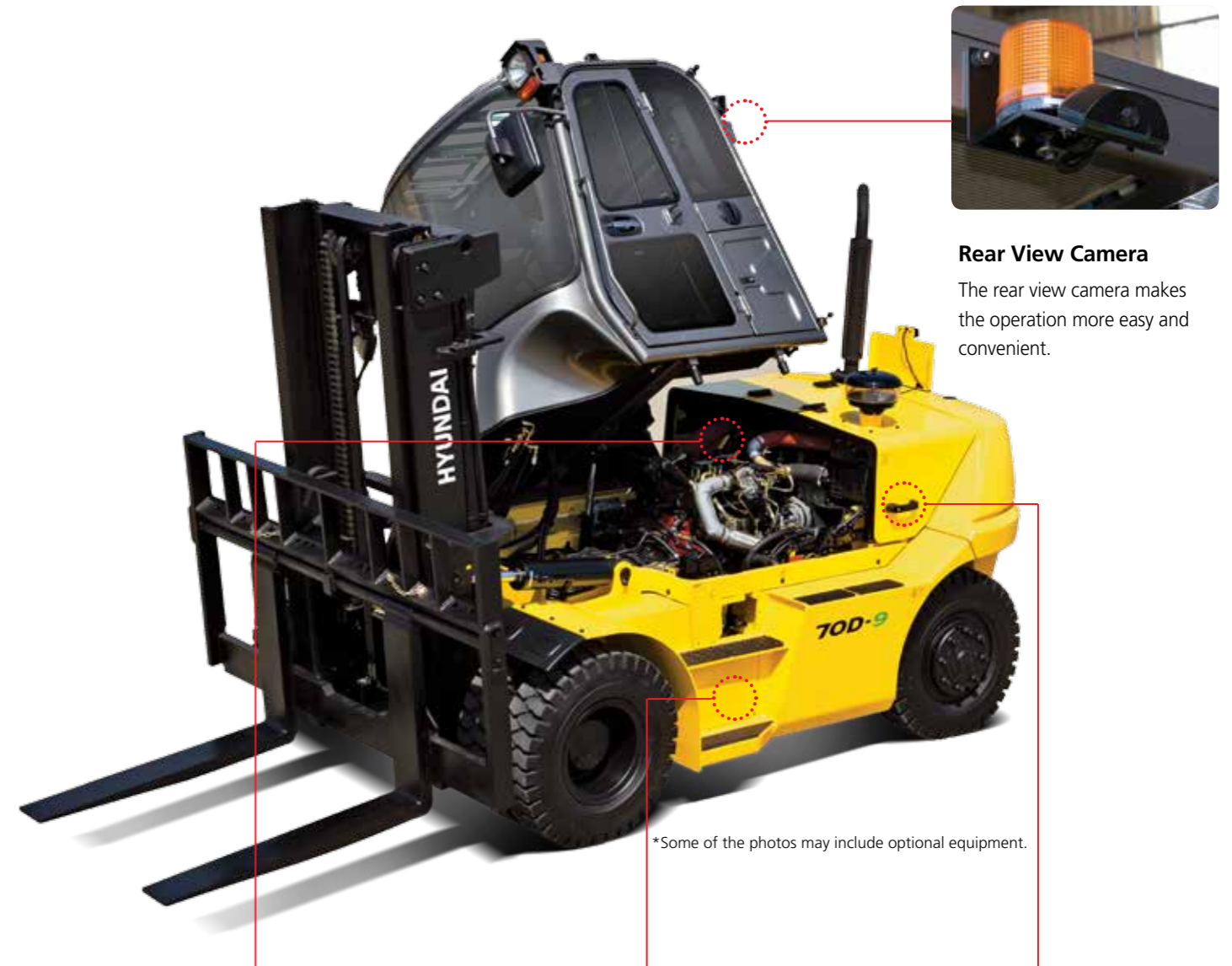
Electrically Monitored Air Filter Easy-to-Access

Air cleaner sensor alerts the operator of a clogged air filter and allows replacement before damage.



Waterproof & Dustproof Cover

Newly developed Waterproof and Dustproof fuse box and relay box for ease of maintenance.



Rear View Camera

The rear view camera makes the operation more easy and convenient.

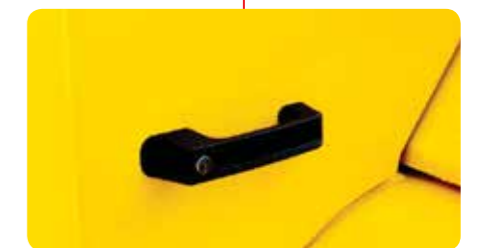
*Some of the photos may include optional equipment.



Easy-to-Access Washer Tank



Maintenance Free Batteries

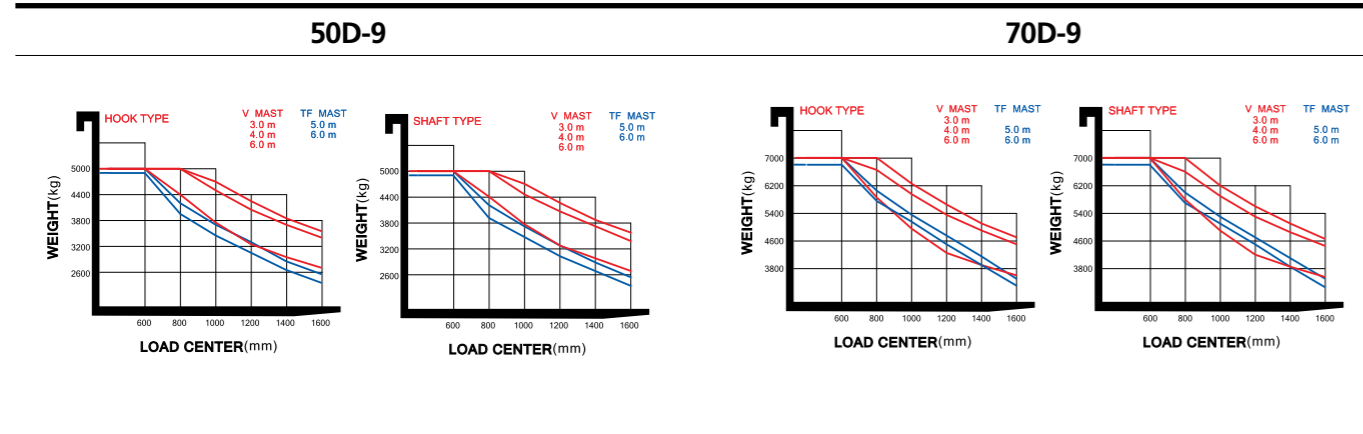


Wing Cover Locking System

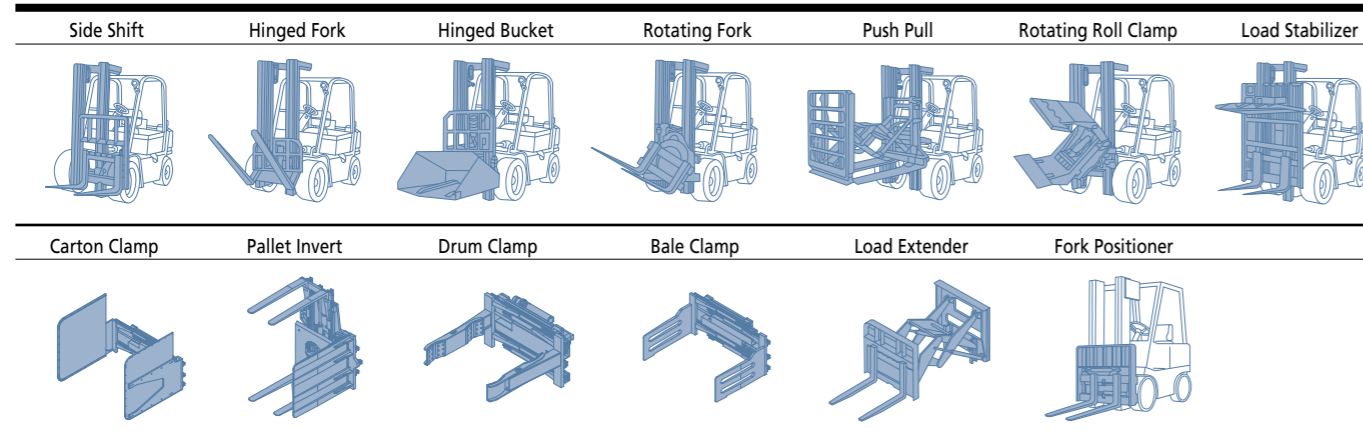
New 9 Series

50/70D-9

Load Capacity



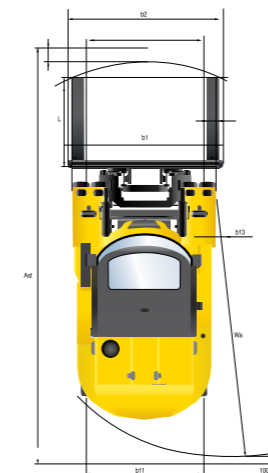
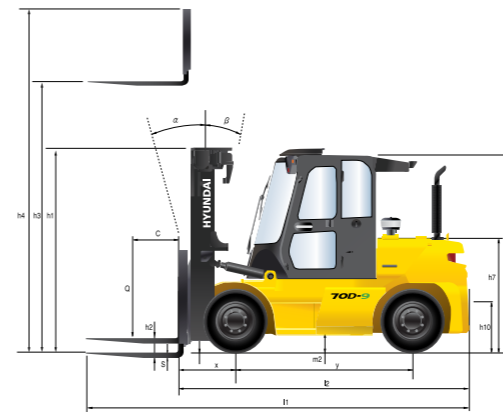
Various Attachments



Optional Items

- **Fork(mm)**
50/70D-9 : 1200(STD), 1350, 1500, 1800, 2000, 2300, 2400
- **Overshoe(mm)**
50D-9 : 1800, 2000, 2200, 2300
70D-9 : 1800, 2000, 2200, 2300
- **Integral Sideshift, Integral Fork Positioner, Sideshift**
- **Tire : Solid(superelastic) / Non-marking**
- **M.C.V : 2-Spool, 3-Spool, 5-Spool**
- **Seat : Armrest, Heat, Backrest Ext, Buckle SW**
- **Weight Indicator**
- **Rear View Camera**
- **Cabin (Heater & Air Conditioner)**
- **Battery Disconnect Switch (Master Switch)**
- **Beacon Lamp (LED) (Amber, Red, Blue)**
- **Rear Work Lamp**
- **Top Wiper**

Dimension



Specification

Identification			
1.1	Manufacturer	Hyundai	Hyundai
1.2	Manufacturer's model designation	50D-9	70D-9
1.3	Drive: electric (battery or mains),diesel,petrol,fuel gas>manual	Diesel	Diesel
1.4	Type of operation:hand,pedestrian,standing,seated,order-picker	seated	seated
1.5	Load capacity / Rated load	kg 5,000	7,000
1.6	Load center distance	c mm 600	600
1.8	Load distance, center of drive axle to fork	x mm 610	610
1.9	Wheelbase	y mm 2,300	2,300
Weights			
2.1	Service weight	kg 8,890	10,474
2.2	Axle loading, loaded front / rear	kg 12,153 / 1,692	15,126 / 2,273
2.3	Axle loading, unloaded front / rear	kg 4,509 / 4,335	4,426 / 5,972
Wheels, Chassis			
3.1	Tires ; Pneumatic(P), Solid(S), Non-marking(N)	P	P
3.2	Tires size, front	8.25-15-14PR	8.25-15-14PR
3.3	Tires size, rear	8.25-15-14PR	8.25-15-14PR
3.4	Number of wheels front / rear (x=driven wheels)	4 x / 2	4 x / 2
3.5	Track width, front	mm 1,580	1,580
3.6	Track width, rear	mm 1,604	1,604
Basic Dimensions			
4.1	Mast / fork carriage tilt forward / backward (α / β) degrees	15 / 10	15 / 10
4.2	Lowered mast height	h1 (mm) 2,515	2,515
4.3	Free lift	h2 (mm) 140	140
4.4	Lift height	h3 (mm) 3,030	3,030
4.5	Extended mast height	h4 (mm) 4,275	4,275
4.7	Overhead guard height (cabin)	h6 (mm) 2572	2572
4.8	Seat height / standing height rel. to SIP	h7 (mm) 1,551	1,551
4.12	Coupling height	h10 (mm) 425	425
4.19	Overall length	l1 (mm) 4,716	4,866
4.20	Length to face of forks	l2 (mm) 3,516	3,666
4.21	Overall width	b1 (mm) 2,088	2,088
4.22	Fork dimensions(hook type)	s / e / l (mm) 60 x 150 x 1,200	65 x 150 x 1,200
4.23	Fork carriage ISO 2328, class / type A,B	Class IV	Class IV
4.24	Fork-carriage width	b3 (mm) 2,068	2,068
4.31	Ground clearance, loaded, under mast	m1(mm) 195	195
4.32	Ground clearance, centre of wheelbase	m2(mm) 199	191
4.33	Aisle width for pallets 1,000x1,200 crossways (LxW)	Ast(mm) 5,129	5,251
4.34	Aisle width for pallets 800x1,200 lengthways (WxL)	Ast(mm) 5,329	5,451
4.35	Turning radius	Wa(mm) 3,314	3,436
4.36	Smallest pivot point distance	b13 (mm) 1,224	1,224
Performance Data			
5.1	Travel speed, unloaded	km/h 33.9	33.6
5.2	Lift speed, loaded/ unloaded	mm/s 440 / 460	420 / 460
5.3	Lowering speed, loaded/unloaded	mm/s 500 / 450	500 / 450
5.5	Drawbar pull, loaded	kg 7,591	7,664
5.7	Gradient performance, loaded	% 58.7	44.4
5.9	Acceleration time, loaded/ unloaded(10m)	sec -	-
5.10	Service brake	FOOT(Hydraulic)	FOOT(Hydraulic)
Engine			
6.1	Engine manufacturer / type	CUMMINS / QSF3.8	CUMMINS / QSF3.8
6.2	Engine power acc. to ISO 1585	kW(ps)/rpm 75(102) / 2,200	75(102) / 2,200
6.3	Maximum Torque	kgf.m/rpm 42.3 / 1,600	42.3 / 1,600
6.4	No. of cylinder / Displacement	EA/cc 4 / 3,800	4 / 3,800
6.5	Fuel consumption acc. To VDI cycle	ℓ /h 8.1	8.3
Other Details			
8.1	Type of drive control	Full Auto	Full Auto
8.2	Operating pressure, system / attach	bar 185 / 150	185 / 150
8.3	Oil volume (hydraulic)	ℓ 132	132
8.4	Sound pressure level (at driver's ear according to DIN 12053)	dB(A) 79.8	79.8
8.5	Trailer coupling, type DIN	Pin	Pin

Air Conditioning System

The air condition system for the machine contains the fluorinated greenhouse gas with global warming potential of R134a. (Global Warming Potential : 1430)
The system hold 0.55kg refrigerant consisting of a CO₂ equivalent 0.79kg metric tonne. For more information, Please refer to the manual.