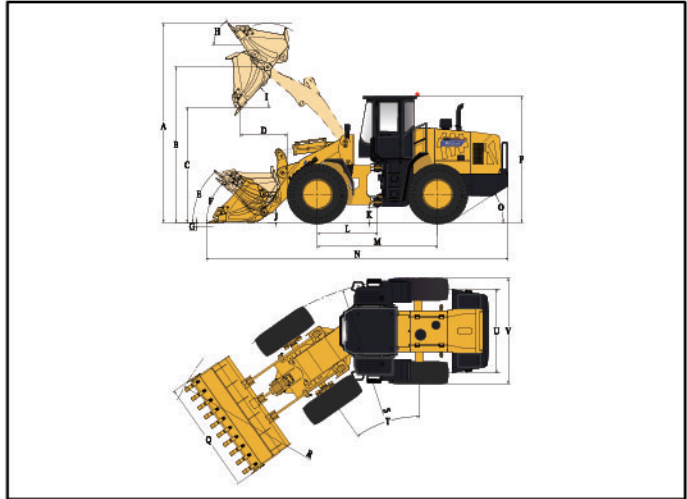


DIMENSIONS

All dimensions are approximate. Dimensions may vary with bucket and tire choice. Refer to operating specifications.



NO.	DESCRIPTION	UNIT	STD	High Dump
A	Overall Height – Bucket Raised	mm	4737	5080
B	Bucket Pin Height at Max. Lift	mm	3710	4064
C	Dump Clearance at Max. Lift (45°)	mm	2904	3249
D	Reach at Max. Lift and 45° Dump	mm	1095	1002
E	Rack Back Angle at Carry	°	46.3	46.6
F	Rack Back Angle at Ground	°	40	40.9
G	Digging Depth	mm	30-40	30-40
H	Rack Back Angle at Max. Lift	°	50.7	47
I	Dump Angle at Max. Lift	°	46.6	45
J	Carry Height	mm	400	400
K	Ground Clearance	mm	345	345
L	Center Line of Front Axle to Hitch	mm	1425	1425
M	Wheel Base	mm	2850	2850
N	Overall Length	mm	7200	7450
O	Departure Angle	°	27	27
P	Height to Top of Cab	mm	3180	3180
Q	Overall Width over Bucket	mm	2500	2500
R	Min. Turning Radius over Bucket	mm	6190	6280
S	Min. Turning Radius over Tires	mm	5675	5675
T	Steering Angle – Left/Right	°	35	35
U	Width at Tread Center	mm	1850	1850
V	Overall Width over Tires	mm	2320	2320

OVERALL DATA

Bucket Capacity	1.7m³	1.7m³
Rated Payload	3000kg	3000kg
Operating Weight	10300±300kg	10500±300kg
Traction Force	97±3kN	97±3kN
Breakout Force	105±3kN	95±3kN
LxWxH(mm)	7200×2500×3180	7450×2500×3180

ENGINE&ELECTRICAL SYSTEM

Maker/Model	WEICHAI/WP6G125E22
Emission Standard	EPA (Tier II)National II
Engine Type	4 Stroke, Turbocharged, Water-cooled, Direct Injection, Diesel Engine
Rated Power	92kW(125hp)/2200rpm
Maximum Torque	500N·m/1400-1600rpm
Bore x Stroke (mm)	105×130
No. of Cylinders/Displacement	6/6.75L
Compression Ratio	18.0
Air Cleaner	Three Stage Air Cleaner
Alternator	55Amp
Battery	2-24V/105Ah
Starting Motor	24V/6kW
Heating Capacity (W)	5000W
Cooling Capacity (W)	4700W

Lonking (Fujian) International Trade Co., Ltd.
Lonking Holdings Limited
 Add:26 Minyi Road,Xinqiao,Songjiang Industrial Zone,Shanghai
 P.C: 201612
 Tel: +86-21-3760 2200-5650
 http://www.lonkinggroup.com
 E-mail:export@lonking.cn

Lonking, Lonking CDM Series and their respective logos, as well as corporate identity in this wallet are trademarks of Lonking Holdings Ltd., and may not be used without written permission.
 2016/02

DRIVE TRAIN

Transmission Type			Countershaft Powershift Transmission		
Shift Type			Mechanical Powershift Control		
Pressure of Transmission			1.1-1.5MPa		
Torque Converter Type			Single-stage, Single-turbine, 3-element		
Torque Ratio			3.2		
Axles			Rigid Front Axle&Oscillating Rear Axle		
Rear Axle Oscillation (°)			±10°		
Differential			Conventional		
Main Reducer			Spiral Bevel, 1-stage Reduction		
Final Reducer			Planetary Reduction		
Tire			17.5-25 L-3 12PR TT		
Travel Speeds	km/h	1st	2nd	3rd	4th
	Forward	7	12	24	36
	Reverse	8.5	28		

BRAKE SYSTEM

Service Brake	Single Circuit Caliper, Dry Brake
Setting Pressure	0.70-0.78MPa
Parking Brake	Flexible Shaft Controlled Caliper Brake
Emergency Brake	Flexible Shaft Controlled Caliper Brake

STEERING SYSTEM

Type		Hydraulic Load Sensing System
Pump		Gear Pump, 176L/min • 2200rpm
System Pressure		14MPa
Cylinder	Type	Double Acting
	Bore x Stroke	2-80x315mm
Steering Angle		±35°

HYDRAULIC SYSTEM

Type		Mechanical Shift Control		
Pump		Gear Pump, 176L/min • 2200rpm		
Control Valve		2 Spool (Bucket&Boom)		
System Pressure		16MPa		
Cylinder	Lift Cylinder	2-125x784mm		
No.-Bore x stroke	Tilt Cylinder	1-140x553mm		
Joystick Control Pressure		--MPa		
Cycle Time	Raise	Dump	Lower	Total
(Sec)	5.5	1.3	3.7	10.5

SERVICE REFILL CAPACITY

Fuel Tank (L)	200L
Hydraulic Tank (L)	150/155 (3 rd Spool for Auxiliary Function)
Crankshaft (L)	17L
Transmission (L)	36L
Front Axle/Rear Axle (L)	18.5L/18.5L

STANDARD EQUIPMENT

WEICHAI Engine	Mechanical Shift Control
LONKING Transmission	Standard Lift&Bucket (1.7m³)
Mechanical Powershift Control	ROPS&FOPS Cabin
LONKING Axles	Air Conditioner
Flexible Shaft Controlled Caliper Brake(Parking Brake)	Radio&MP3
	Mechanical Instrument Panel

OPTIONAL EQUIPMENT

Cold Starting (-35℃)	Quick-change Bucket (1.7m³)
Oil-bath Air Filter	Bucket 1(2.0m³)
17.5R25 ★★ L-3 TL	Enlarged Bucket(2.3m³)
3 rd Spool for Auxiliary Function	Coal Bucket(2.5m³)
3-lever Control for Lift&Tilt&Auxiliary Function	3 Piece Cutting Edge, Bolt-on Type Bucket
Sliding Cabin Window	Log Fork
Electric Heating Rear Window	Grasping Pitchfork
Lockable Oil Tank Cap	Side Dump Bucket
Rear View Camera	Fork(Quick-change Only)
Pressure Testing Connector	4in1 Bucket(Quick-change Only)
High Lift &Additional Counterweight	Snow Blade(Quick-change Only)
Quick-change Coupler	

For more information on Lonking products,
 Please contact our local agent:

Specifications and design are subject to change without prior notice.
 Machines shown may not include optional accessories.

Lonking
 Efficiency Rules the Future



CDM833
WHEEL LOADER

POWERFUL WEICHAI DEUTZ ENGINE
 LONKING TRANSMISSION
 LONKING AXLES
 ROPS&FOPS CABIN
 VARIETY WITH ATTACHMENT
 CONVENIENT MAINTENANCE



- RATED POWER:** 92kW/ 2200 rpm
- BUCKET CAPACITY:** 1.7m³
- RATED PAYLOAD:** 3000kg
- OPERATING WEIGHT:** 10300kg