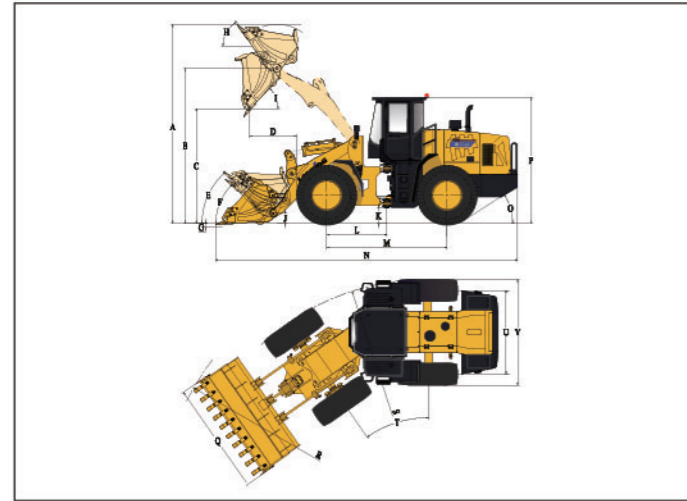


DIMENSIONS

All dimensions are approximate. Dimensions may vary with bucket and tire choice. Refer to operating specifications.



NO.	DESCRIPTION	UNIT	STD	High Q-Change
A	Overall Height – Bucket Raised	mm	4790	5545
B	Bucket Pin Height at Max. Lift	mm	3710	4324
C	Dump Clearance at Max. Lift (45°)	mm	2806	3135
D	Reach at Max. Lift and 45° Dump	mm	1170	1170
E	Rack Back Angle at Carry	°	47	46.3
F	Rack Back Angle at Ground	°	44	40.1
G	Digging Depth	mm	30-40	30-40
H	Rack Back Angle at Max. Lift	°	55	51
I	Dump Angle at Max. Lift	°	45	45
J	Carry Height	mm	400	334
K	Ground Clearance	mm	347	374
L	Center Line of Front Axle to Hitch	mm	1425	1425
M	Wheel Base	mm	2850	2850
N	Overall Length	mm	7520	8080
O	Departure Angle	°	27	29
P	Height to Top of Cab	mm	3180	3180
Q	Overall Width over Bucket	mm	2500	2936
R	Min. Turning Radius over Bucket	mm	6240	6740
S	Min. Turning Radius over Tires	mm	5680	5667
T	Steering Angle – Left/Right	°	35	35
U	Width at Tread Center	mm	1850	1850
V	Overall Width over Tires	mm	2320	2294

OVERALL DATA

MODEL	STANDARD	HIGH QUICK-CHANGE
Bucket Capacity	1.8m³	2.3m³
Rated Payload	3500kg	3000kg
Operating Weight	11620±300kg	12300±300kg
Traction Force	106±3kN	97±3kN
Breakout Force	103±3kN	97±3kN
LxWxH	7520x2500x3180	8080x2936x3180

ENGINE&ELECTRICAL SYSTEM

Maker/Model	CUMMINS/QSB6.7-C133
Emission Standard	EPA (Tier III)/EU Stage IIIA
Engine Type	4 Stroke, Turbocharged & Charge Air Cooled, Bosch Electronic, Diesel Engine
Rated Power	99kW(133hp)/2200rpm
Maximum Torque	584N·m/1450rpm
Bore x Stroke (mm)	107x124
No. of Cylinders/Displacement	6/6.7L
Compression Ratio	17.2
Air Cleaner	Three Stage Air Cleaner with Cyclone Pre-cleaner
Alternator	70Amp
Battery	2-24V/105Ah
Starting Motor	24V/5.8kW
Heating Capacity (W)	5000W
Cooling Capacity (W)	4700W

DRIVE TRAIN

Transmission Type	Countershaft Powershift Transmission			
Shift Type	Electronic Powershift Control			
Pressure of Transmission	1.5-1.7MPa			
Torque Converter Type	Single-stage, Single-turbine, 3-element			
Torque Ratio	3.2			
Axles	Rigid Front Axle&Oscillating Rear Axle			
Rear Axle Oscillation (°)	±10°			
Differential	Conventional			
Main Reducer	Spiral Bevel, 1-stage Reduction			
Final Reducer	Planetary Reduction			
Tire(Standard)	17.5-25 L-3 12PR TT			
Tire(High Quick-change)	20.5-25 L-3 16PR TT			
Travel Speeds				
Forward	7.0	12.0	28.0	38.0
Reverse	7.0	12.0	28.0	

BRAKE SYSTEM

Service Brake	Full Hydraulic Wet-discs Brake
Setting Pressure	5.3-5.7MPa
Parking Brake	Hydraulic Actuated Drum Brake
Emergency Brake	Hydraulic Actuated Drum Brake

STEERING SYSTEM

Type	Hydraulic Load Sensing System
Pump	Gear Pump, 246L/min • 2200rpm
System Pressure	14MPa
Cylinder	Type Double Acting
Bore x Stroke	2-80x315mm
Steering Angle	±35°

HYDRAULIC SYSTEM

Type(Standard)	Single-lever(Joystick) Control			
Type(High Quick-change)	Double-lever(Joystick) Control			
Pump	Gear Pump, 246L/min • 2200rpm			
Control Valve (Standard/High Quick-change)	2/3 Spool			
System Pressure	16MPa			
Cylinder	Lift Cylinder 2-125x784mm			
No.-Bore x stroke	Tilt Cylinder 1-140x553mm			
Joystick Control Pressure	2.5MPa			
Cycle Time (Sec)	Raise 5.5	Dump 1.3	Lower 3.7	Total 10.5

SERVICE REFILL CAPACITY

Fuel Tank (L)	200L
Hydraulic Tank (L)	173/178(3 rd Spool for Auxiliary Function)
Crankshaft (L)	17L
Transmission (L)	37L
Front Axle/Rear Axle (L)	18.5L/18.5L

STANDARD EQUIPMENT

CUMMINS Engine	Single-lever(Joystick) Control
YD-13 Transmission	Standard Lift&Bucket (1.8m³)
Electronic Powershift Control	ROPS&FOPS Cabin
YUNYU Axles	Air Conditioner
Hydraulic Actuated Drum Brake (Parking Brake)	Radio&MP3
	LCD Display

OPTIONAL EQUIPMENT

Cold Starting (-35°C)	Quick-change Coupler
Oil-bath Air Filter	Quick-change Bucket (1.7m³)
20.5-25 L-3 16PR TT	Quick-change Enlarged Bucket (2.3m³)
17.5R25 ★★ L-3 TL	Bucket 1(2.0m³)
20.5R25 ★★ L-3 TL	Enlarged Bucket(2.3m³)
3 rd Spool for Auxiliary Function	Coal Bucket(2.5m³)
Double-lever(Joystick) Control for Lift&Tilt&Auxiliary Function	3 Piece Cutting Edge, Bolt-on Type Bucket
Sliding Cabin Window	Log Fork
Electric Heating Rear Window	Grasping Pitchfork
Lockable Oil Tank Cap	Side Dump Bucket
Rear View Camera	Fork(Quick-change Only)
Pressure Testing Connector	4in1 Bucket(Quick-change Only)
High Lift &Additional Counterweight	Snow Blade(Quick-change Only)

LONKING

Efficiency Rules the Future

CDM835 WHEEL LOADER

POWERFUL ORIGINAL CUMMINS ENGINE
ELECTRONIC-CONTROLLED TRANSMISSION
WET-DISCS BRAKE AXLES
JOYSTICK CONTROL
AC+ROPS&FOPS CABIN
VARIETY WITH ATTACHMENT
CONVENIENT MAINTENANCE



■ RATED POWER:	99kW/2200rpm
■ BUCKET CAPACITY:	1.8m³
■ RATED PAYLOAD:	3500kg
■ OPERATING WEIGHT:	11620kg

LONKING (FU JIAN) INTERNATIONAL TRADE CO.,LTD.

LONKING HOLDINGS LIMITED

Add:26 Minyi Road,Xinqiao,Songjiang Industrial Zone,Shanghai

P.C: 201612

Tel: +86-21-3760 2200-5650

http://www.lonkinggroup.com

E-mail:export@lonking.cn

Lonking, Lonking CDM Series and their respective logos, as well as corporate identity in this wallet are trademarks of Lonking Holdings Ltd. and may not be used without written permission.

2016/02

For more information on Lonking products,
Please contact our local agent:

Specifications and design are subject to change without prior notice.
Machines shown may not include optional accessories.