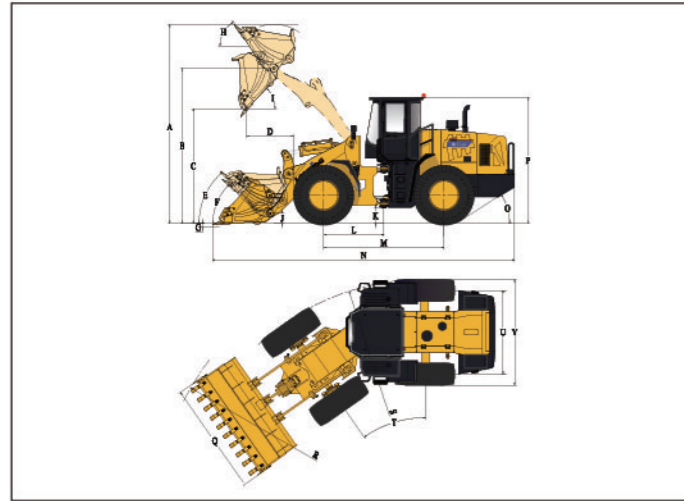


## DIMENSIONS

All dimensions are approximate. Dimensions may vary with bucket and tire choice. Refer to operating specifications.



NO.	DESCRIPTION	UNIT	DIMENSIONS
A	Overall Height – Bucket Raised	mm	4790
B	Bucket Pin Height at Max. Lift	mm	3710
C	Dump Clearance at Max. Lift (45°)	mm	2806
D	Reach at Max. Lift and 45° Dump	mm	1170
E	Rack Back Angle at Carry	°	47
F	Rack Back Angle at Ground	°	44
G	Digging Depth	mm	30-40
H	Rack Back Angle at Max. Lift	°	55
I	Dump Angle at Max. Lift	°	45
J	Carry Height	mm	400
K	Ground Clearance	mm	347
L	Center Line of Front Axle to Hitch	mm	1425
M	Wheel Base	mm	2850
N	Overall Length	mm	7520
O	Departure Angle	°	27
P	Height to Top of Cab	mm	3180
Q	Overall Width over Bucket	mm	2500
R	Min. Turning Radius over Bucket	mm	6240
S	Min. Turning Radius over Tires	mm	5680
T	Steering Angle – Left/Right	°	35
U	Width at Tread Center	mm	1850
V	Overall Width over Tires	mm	2320

## OVERALL DATA

Bucket Capacity	1.8m³
Rated Payload	3500kg
Operating Weight	11620±300kg
Traction Force	106±3kN
Breakout Force	103±3kN
LxWxH	7520x2500x3180mm

## ENGINE&ELECTRICAL SYSTEM

Maker/Model	DF CUMMINS/6BTA5.9-C130
Emission Standard	EPA (Tier II)/EU Stage II
Engine Type	4 Stroke, Turbocharged & Charge Air Cooled, Direct Injection, Diesel Engine
Rated Power	97kW(130hp)/2200rpm
Maximum Torque	580N·m/1400rpm
Bore x Stroke (mm)	102x120
No. of Cylinders/Displacement	6/5.9L
Compression Ratio	17.3
Air Cleaner	Dry, Double Elements
Alternator	45Amp
Battery	2-24V/105Ah
Starting Motor	24V/6kW
Heating Capacity (W)	5000W
Cooling Capacity (W)	4700W

## DRIVE TRAIN

Transmission Type	Countershaft Powershift Transmission				
Shift Type	Electronic Powershift Control				
Pressure of Transmission	1.1-1.5MPa				
Torque Converter Type	Single-stage, Single-turbine, 3-element				
Torque Ratio	3.2				
Axles	Rigid Front Axle&Oscillating Rear Axle				
Rear Axle Oscillation (°)	±10°				
Differential	Conventional				
Main Reducer	Spiral Bevel, 1-stage Reduction				
Final Reducer	Planetary Reduction				
Tire	17.5-25 L-3 12PR TT				
Travel Speeds	km/h	1st	2nd	3rd	4th
Forward	6.5	12.0	32.0		
Reverse	6.8	12.5	33.5		

## BRAKE SYSTEM

Service Brake	Single Circuit Caliper, Dry Brake
Setting Pressure	0.70-0.78MPa
Parking Brake	Flexible Shaft Controlled Caliper Brake
Emergency Brake	Flexible Shaft Controlled Caliper Brake

## STEERING SYSTEM

Type	Hydraulic Load Sensing System	
Pump	Gear Pump, 246L/min • 2200rpm	
System Pressure	14MPa	
Cylinder	Type	Double Acting
	Bore x Stroke	2-80x315mm
Steering Angle		±35°

## HYDRAULIC SYSTEM

Type	Single-lever(Joystick) Control			
Pump	Gear Pump, 246L/min • 2200rpm			
Control Valve	2 Spool (Bucket&Boom)			
System Pressure	16MPa			
Cylinder	Lift Cylinder	2-125x784mm		
	Tilt Cylinder	1-140x553mm		
Joystick Control Pressure	2.5MPa			
Cycle Time (Sec)	Raise	Dump	Lower	Total
	5.5	1.3	3.7	10.5

## SERVICE REFILL CAPACITY

Fuel Tank (L)	200L
Hydraulic Tank (L)	173/178(3 <sup>rd</sup> Spool for Auxiliary Function)L
Crankshaft (L)	17L
Transmission (L)	37L
Front Axle/Rear Axle (L)	18.5L/18.5L

## STANDARD EQUIPMENT

DF CUMMINS Engine	Single-lever(Joystick) Control
LONKING Transmission	Standard Lift&Bucket (1.8m³)
Electronic Powershift Control	ROPS&FOPS Cabin
LONKING Axles	Air Conditioner
Flexible Shaft Controlled Caliper Brake(Parking Brake)	Radio&MP3 LCD Display

## OPTIONAL EQUIPMENT

Cold Starting (-35°C)	Quick-change Bucket (1.7m³)
Oil-bath Air Filter	Bucket 1(2.0m³)
17.5R25 ★★ L-3 TL	Enlarged Bucket(2.3m³)
3 <sup>rd</sup> Spool for Auxiliary Function	Coal Bucket(2.5m³)
Double-lever(Joystick) Control for Lift&Tilt&Auxiliary Function	3 Piece Cutting Edge, Bolt-on Type Bucket
Sliding Cabin Window	Log Fork
Electric Heating Rear Window	Grasping Pitchfork
Lockable Oil Tank Cap	Side Dump Bucket
Rear View Camera	Fork(Quick-change Only)
Pressure Testing Connector	4in1 Bucket(Quick-change Only)
High Lift &Additional Counterweight	Snow Blade(Quick-change Only)
Quick-change Coupler	

For more information on Lonking products, Please contact our local agent:



# LONKING

Efficiency Rules the Future

# CDM835 WHEEL LOADER

POWERFUL DF CUMMINS ENGINE  
LONKING TRANSMISSION  
LONKING AXLES  
JOYSTICK CONTROL  
AC+ROPS&FOPS CABIN  
VARIETY WITH ATTACHMENT  
CONVENIENT MAINTENANCE



■ RATED POWER:	97kW/2200rpm
■ BUCKET CAPACITY:	1.8m³
■ RATED PAYLOAD:	3500kg
■ OPERATING WEIGHT:	11620kg

LONKING (FU JIAN) INTERNATIONAL TRADE CO.,LTD.

## LONKING HOLDINGS LIMITED

Add:26 Minyi Road,Xinqiao,Songjiang Industrial Zone,Shanghai

P.C: 201612

Tel: +86-21-3760 2200-5650

http://www.lonkinggroup.com

E-mail:export@lonking.cn

Lonking, Lonking CDM Series and their respective logos, as well as corporate identity in this wallet are trademarks of Lonking Holdings Ltd. and may not be used without written permission.

2016/02

Specifications and design are subject to change without prior notice. Machines shown may not include optional accessories.